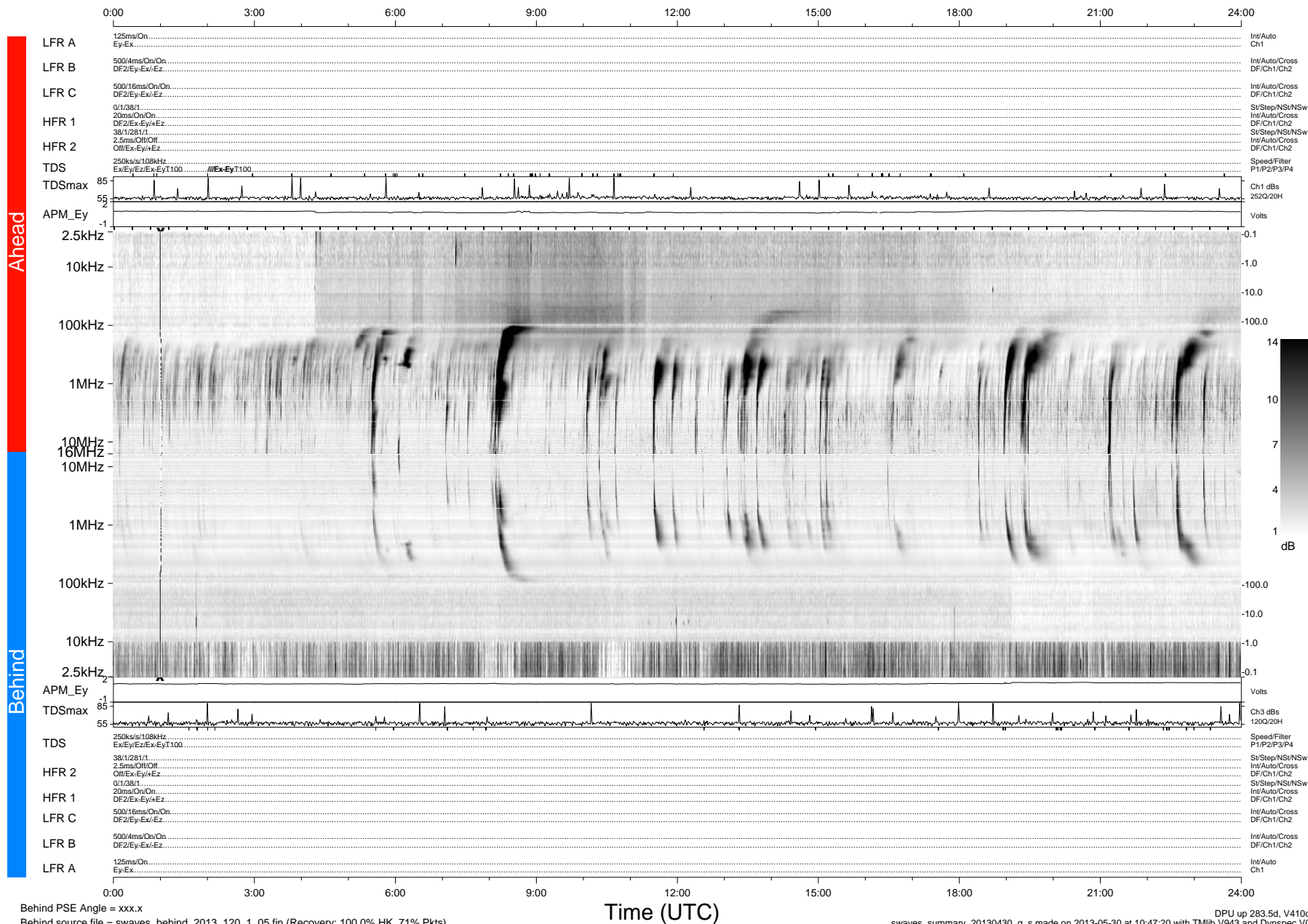


STEREO/WAVES Daily Summary - 30-Apr-2013 (DOY 120)

Ahead source file = swaves_ahead_2013_120_1_05.fin (Recovery:100.1% HK, 92% Pkts)
 Ahead PSE Angle = xxx.x

DPU up 197.4d, V412d24



Behind PSE Angle = xxx.x
 Behind source file = swaves_behind_2013_120_1_05.fin (Recovery: 100.0% HK, 71% Pkts)

DPU up 283.5d, V410d25
 swaves_summary_20130430_g_s made on 2013-05-30 at 10:47:20 with TMIlib V943 and Dynspec V016