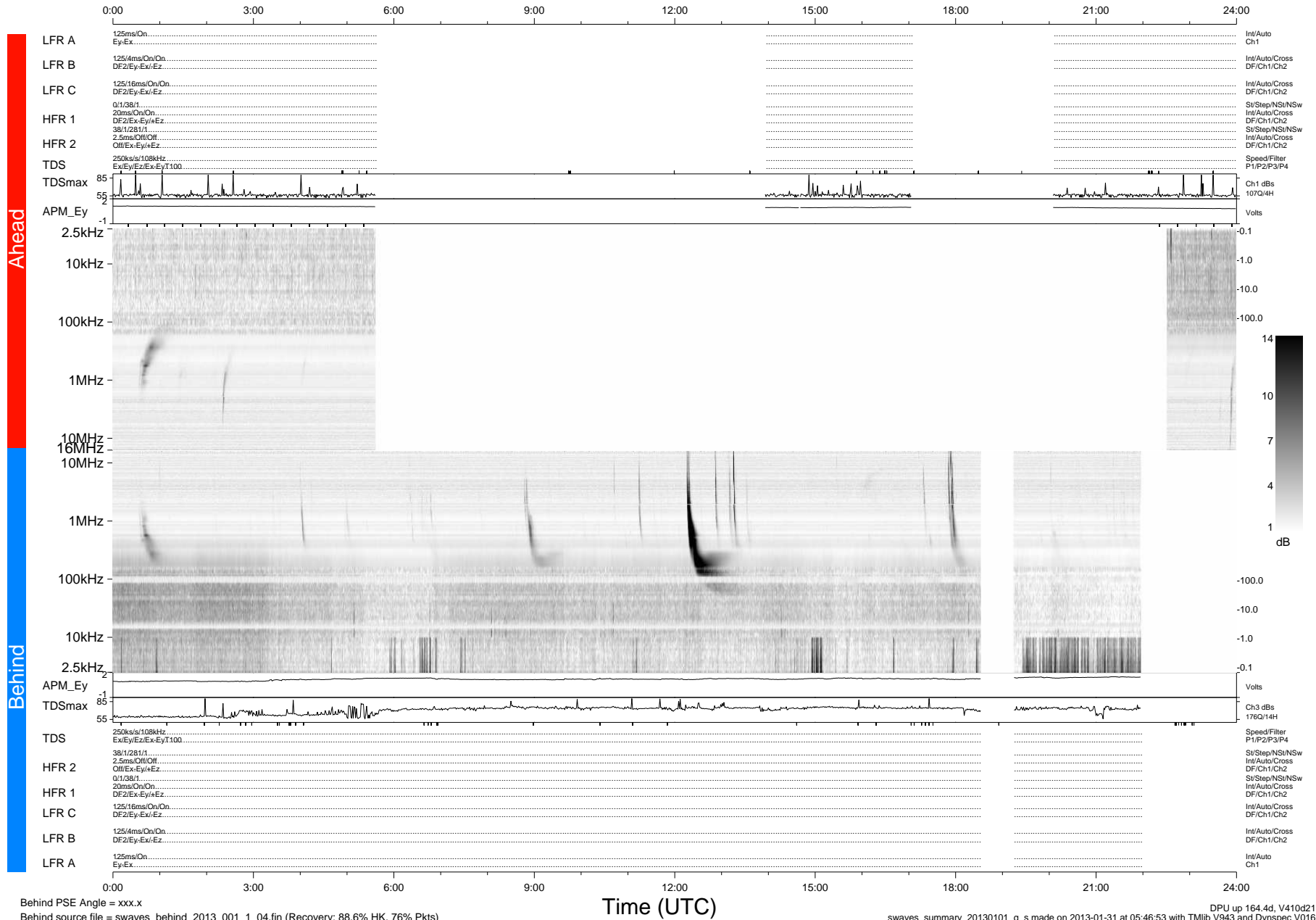


# STEREO/WAVES Daily Summary - 01-Jan-2013 (DOY 001)

Ahead source file = swaves\_ahead\_2013\_001\_1\_04.fin (Recovery:52.7% HK, 34% Pkts)  
 Ahead PSE Angle = xxx.x

DPU up 78.4d, V412d20



Behind PSE Angle = xxx.x  
 Behind source file = swaves\_behind\_2013\_001\_1\_04.fin (Recovery: 88.6% HK, 76% Pkts)

DPU up 164.4d, V410d21  
 swaves\_summary\_20130101\_g\_s made on 2013-01-31 at 05:46:53 with TMlib V943 and Dynspec V016