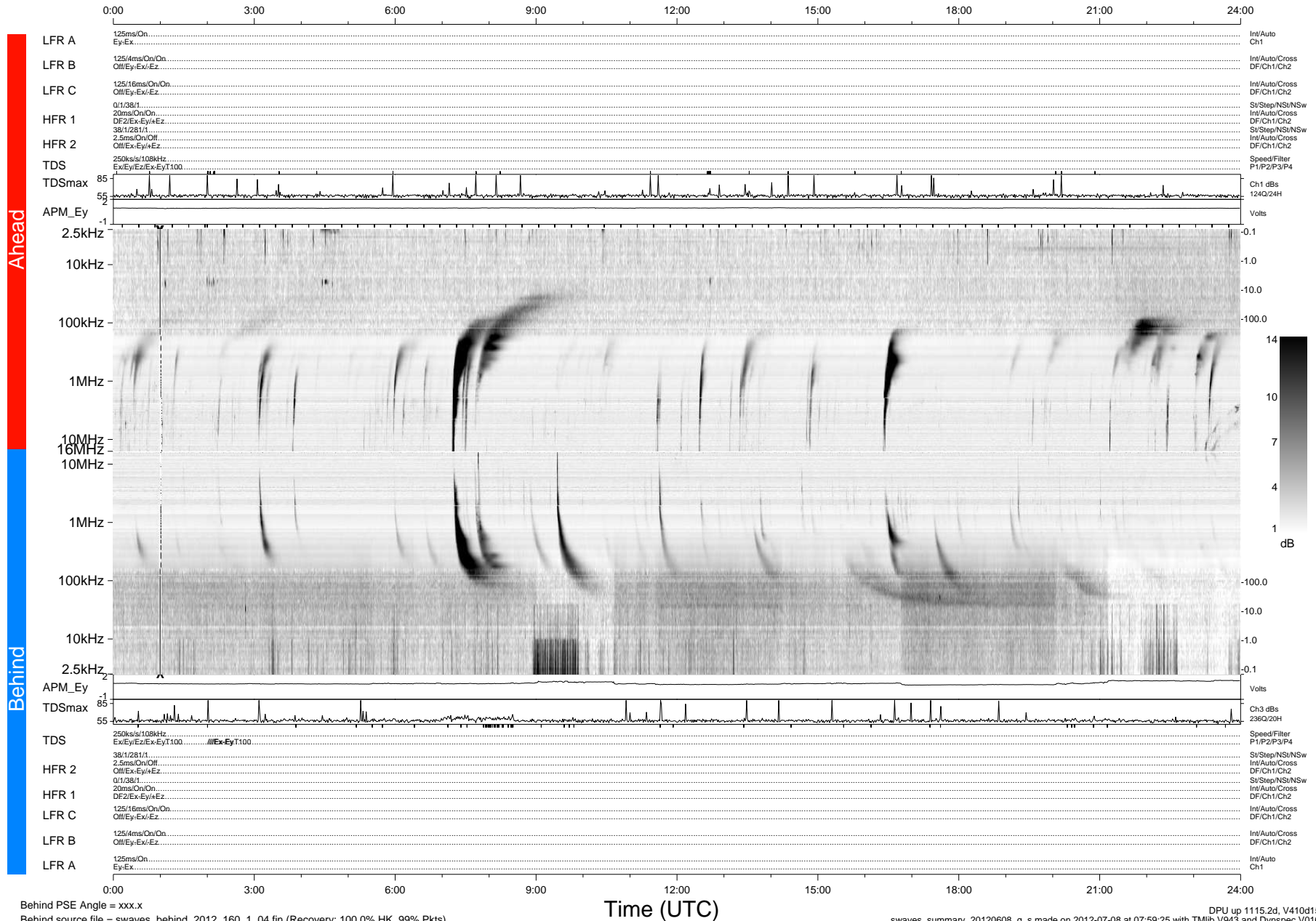


# STEREO/WAVES Daily Summary - 08-Jun-2012 (DOY 160)

Ahead source file = swaves\_ahead\_2012\_160\_1\_04.fin (Recovery:100.0% HK, 83% Pkts)  
 Ahead PSE Angle = xxx.x

DPU up 1039.4d, V410d14



Behind PSE Angle = xxx.x  
 Behind source file = swaves\_behind\_2012\_160\_1\_04.fin (Recovery: 100.0% HK, 99% Pkts)

Time (UTC)

DPU up 1115.2d, V410d15  
 swaves\_summary\_20120608\_g\_s made on 2012-07-08 at 07:59:25 with TMIb V943 and Dynspec V016