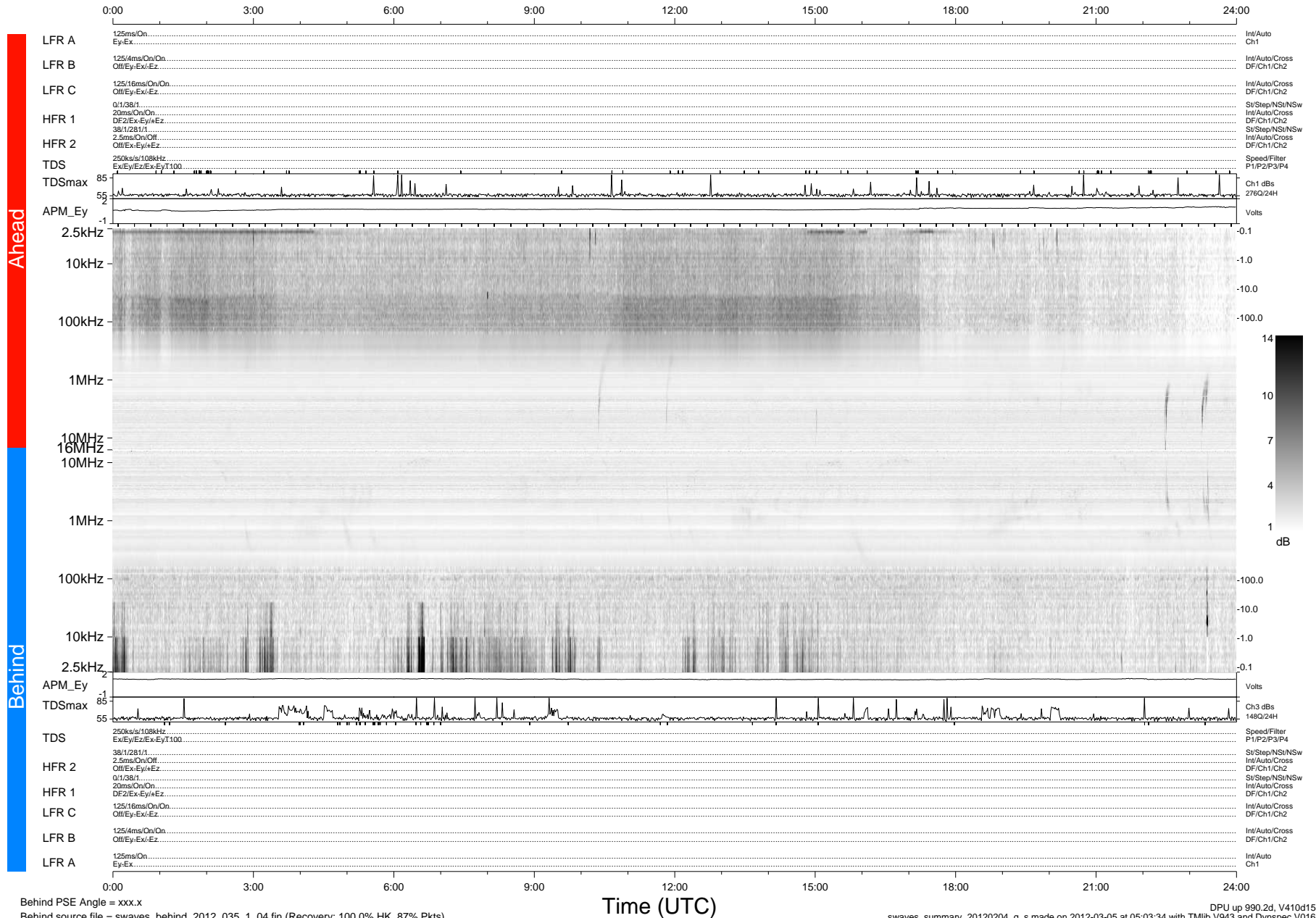


# STEREO/WAVES Daily Summary - 04-Feb-2012 (DOY 035)

Ahead source file = swaves\_ahead\_2012\_035\_1\_04.fin (Recovery:100.0% HK, 106% Pkts)  
 Ahead PSE Angle = xxx.x

DPU up 914.4d, V410d14



Behind PSE Angle = xxx.x  
 Behind source file = swaves\_behind\_2012\_035\_1\_04.fin (Recovery: 100.0% HK, 87% Pkts)

Time (UTC)

DPU up 990.2d, V410d15  
 swaves\_summary\_20120204\_g\_s made on 2012-03-05 at 05:03:34 with TMIlib V943 and Dynspec V016