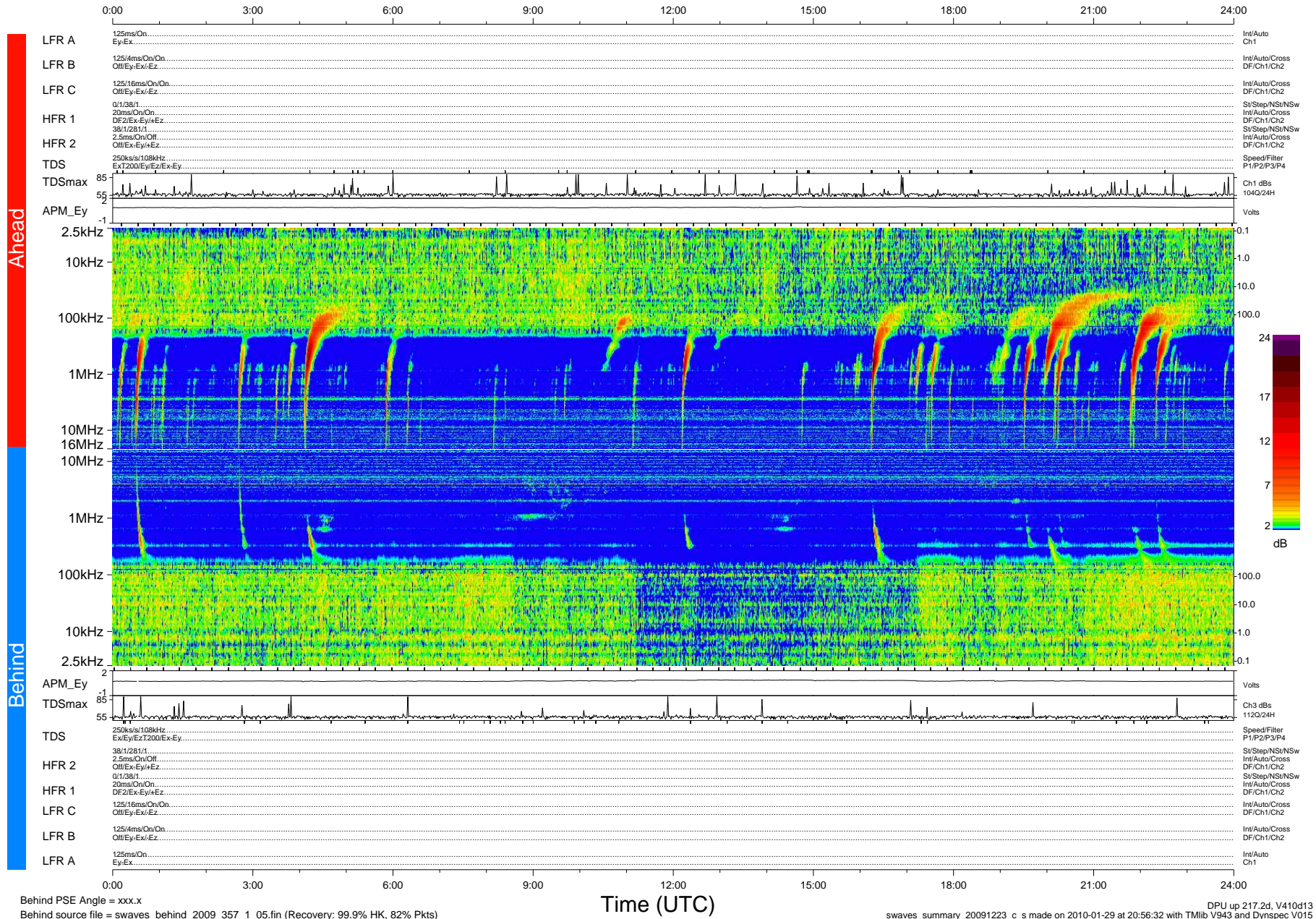


# STEREO/WAVES Daily Summary - 23-Dec-2009 (DOY 357)

Ahead source file = swaves\_ahead\_2009\_357\_1\_05.fin (Recovery:100.0% HK, 81% Pkts)  
 Ahead PSE Angle = xxx.x

DPU up 141.4d, V410d12



Behind PSE Angle = xxx.x  
 Behind source file = swaves\_behind\_2009\_357\_1\_05.fin (Recovery: 99.9% HK, 82% Pkts)

Time (UTC)

DPU up 217.2d, V410d13  
 swaves\_summary\_20091223\_c\_s made on 2010-01-29 at 20:56:32 with TMIb V943 and Dynspec V015