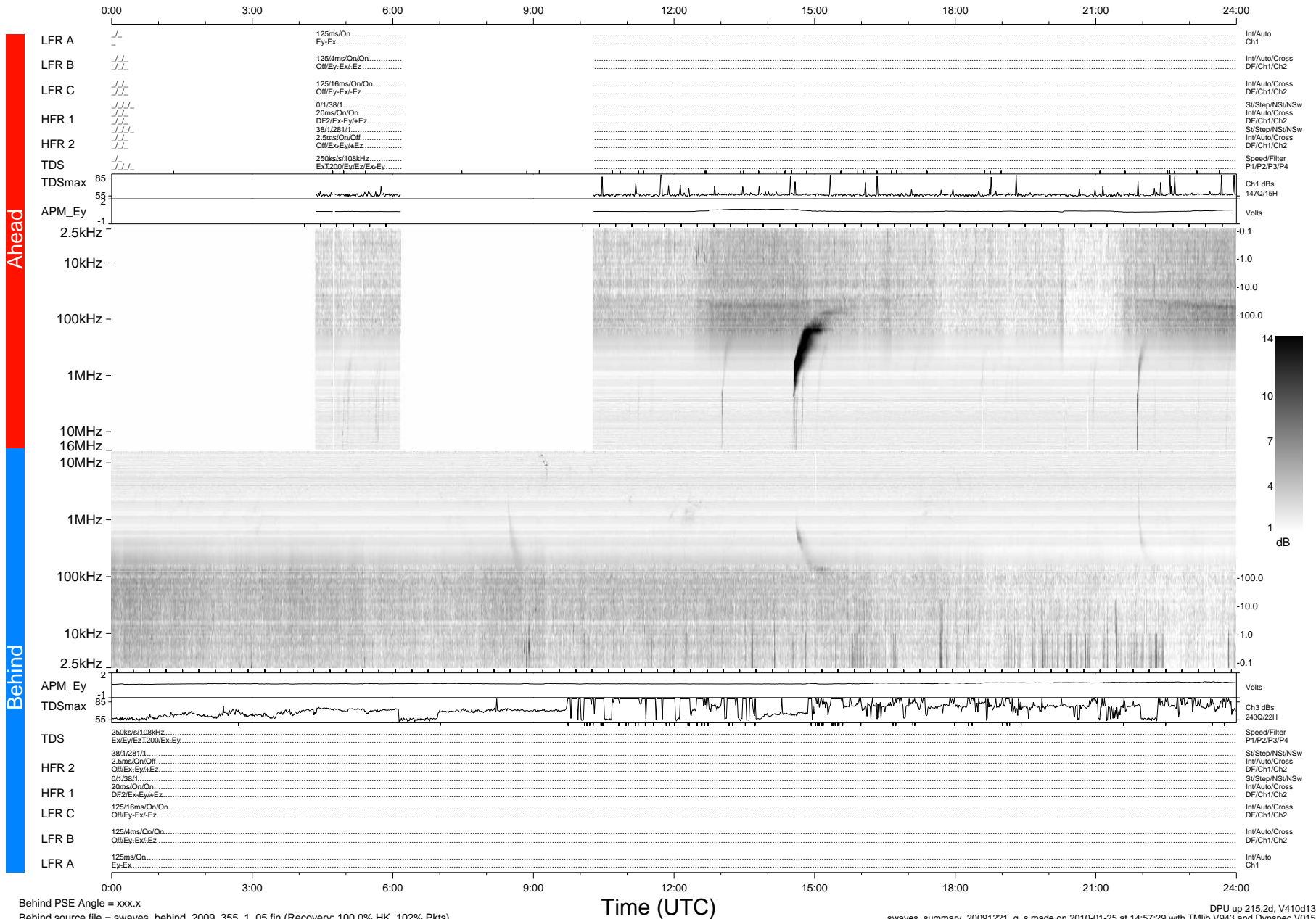


STEREO/WAVES Daily Summary - 21-Dec-2009 (DOY 355)

Ahead source file = swaves_ahead_2009_355_1_05.fin (Recovery:64.6% HK, 66% Pkts)
 Ahead PSE Angle = xxx.x

DPU up 139.4d, V410d12



Behind PSE Angle = xxx.x
 Behind source file = swaves_behind_2009_355_1_05.fin (Recovery: 100.0% HK, 102% Pkts)

DPU up 215.2d, V410d13
 swaves_summary_20091221_g_s made on 2010-01-25 at 14:57:29 with TMIlib V943 and Dynspec V015