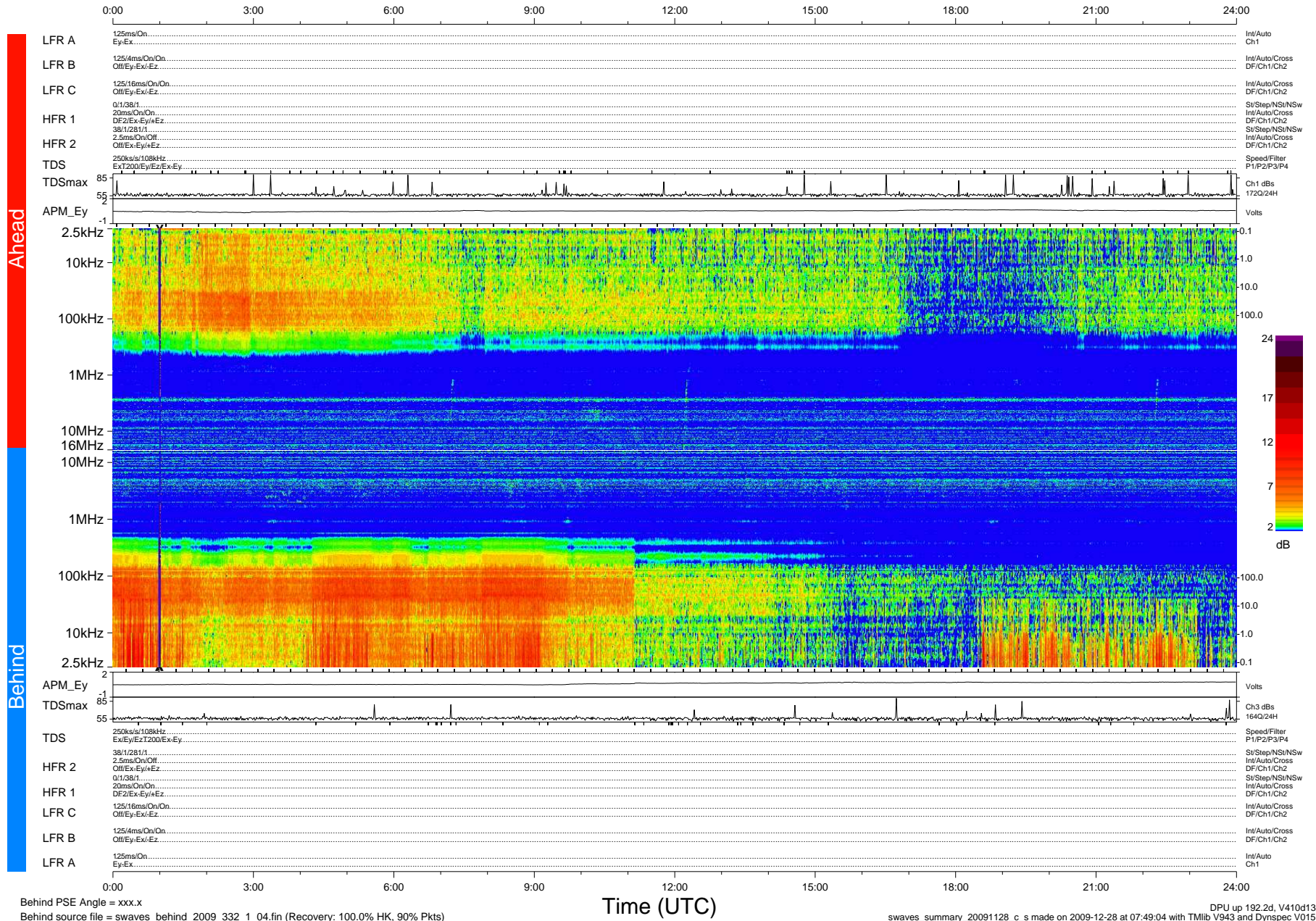


STEREO/WAVES Daily Summary - 28-Nov-2009 (DOY 332)

Ahead source file = swaves_ahead_2009_332_1_04.fin (Recovery:100.0% HK, 91% Pkts)
 Ahead PSE Angle = xxx.x

DPU up 116.4d, V410d12



Behind PSE Angle = xxx.x
 Behind source file = swaves_behind_2009_332_1_04.fin (Recovery: 100.0% HK, 90% Pkts)

Time (UTC)

DPU up 192.2d, V410d13
 swaves_summary_20091128_c_s made on 2009-12-28 at 07:49:04 with TMIb V943 and Dynspec V015