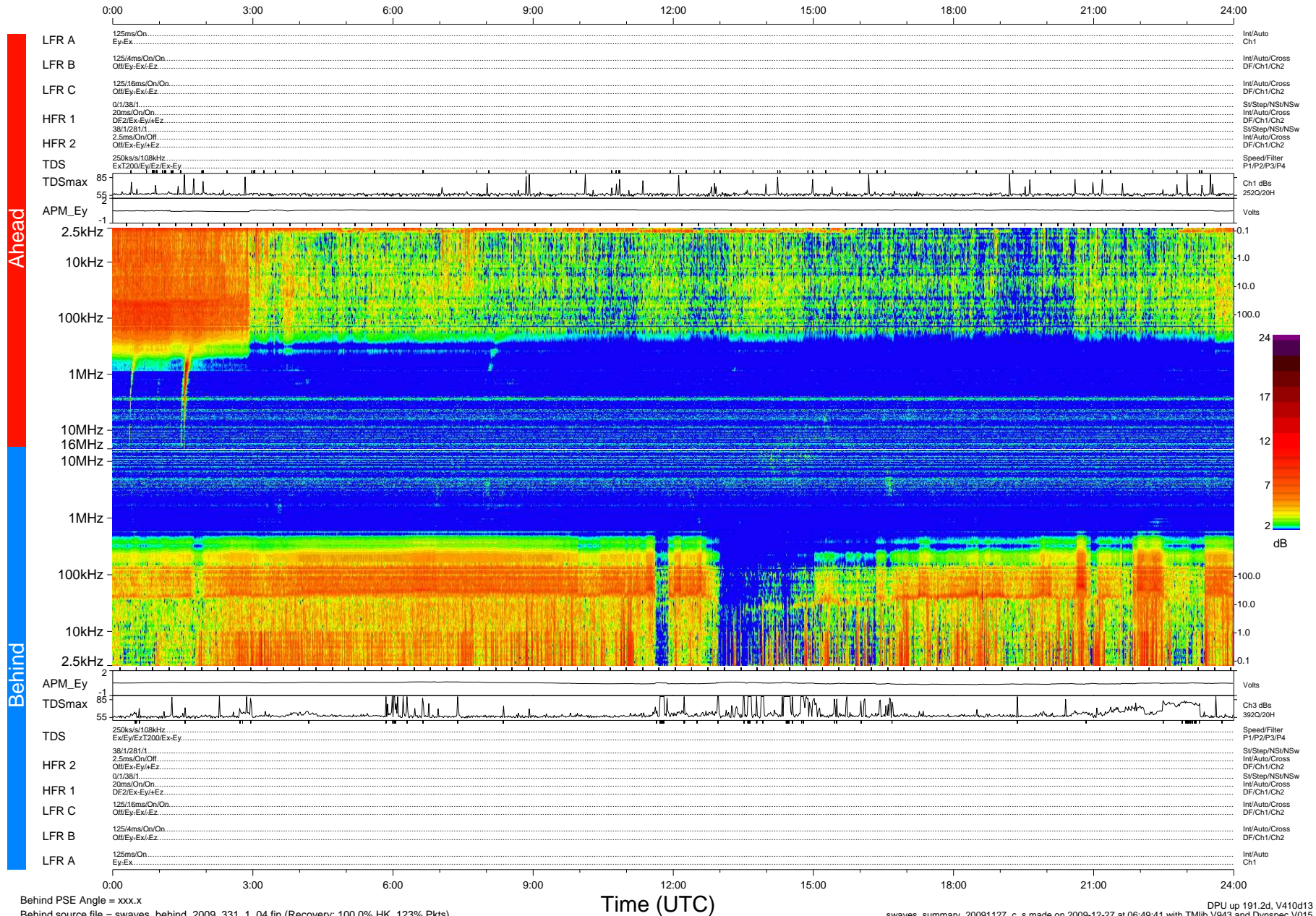


# STEREO/WAVES Daily Summary - 27-Nov-2009 (DOY 331)

Ahead source file = swaves\_ahead\_2009\_331\_1\_04.fin (Recovery:100.0% HK, 102% Pkts)  
 Ahead PSE Angle = xxx.x

DPU up 115.4d, V410d12



Behind PSE Angle = xxx.x  
 Behind source file = swaves\_behind\_2009\_331\_1\_04.fin (Recovery: 100.0% HK, 123% Pkts)

Time (UTC)

DPU up 191.2d, V410d13  
 swaves\_summary\_20091127\_c\_s made on 2009-12-27 at 06:49:41 with TMIb V943 and Dynspec V015