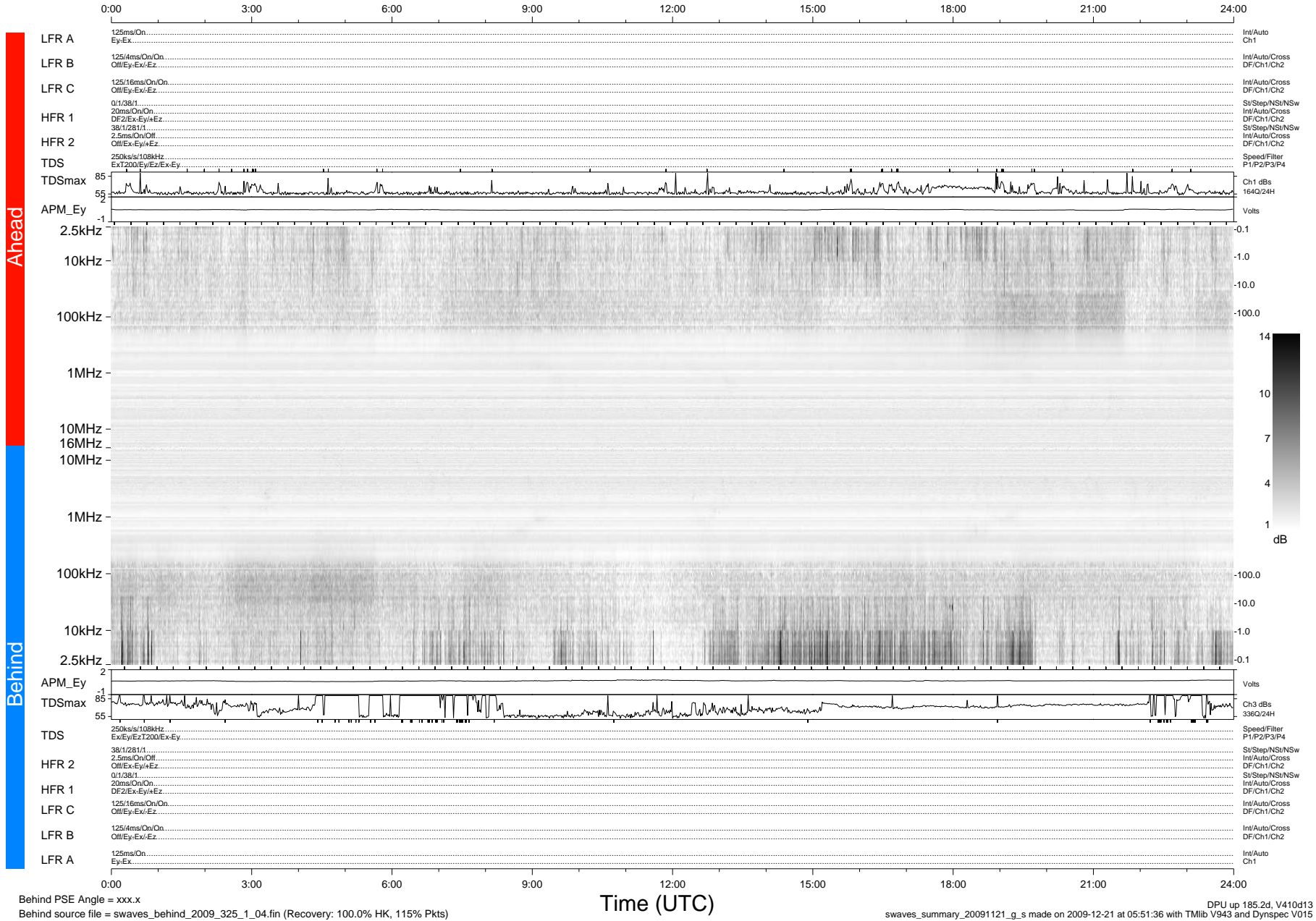


STEREO/WAVES Daily Summary - 21-Nov-2009 (DOY 325)

Ahead source file = swaves_ahead_2009_325_1_04.fin (Recovery:100.0% HK, 90% Pkts)
 Ahead PSE Angle = xxx.x

DPU up 109.4d, V410d12



Behind PSE Angle = xxx.x
 Behind source file = swaves_behind_2009_325_1_04.fin (Recovery: 100.0% HK, 115% Pkts)

Time (UTC)

DPU up 185.2d, V410d13
 swaves_summary_20091121_g_s made on 2009-12-21 at 05:51:36 with TMIlib V943 and Dynspec V015