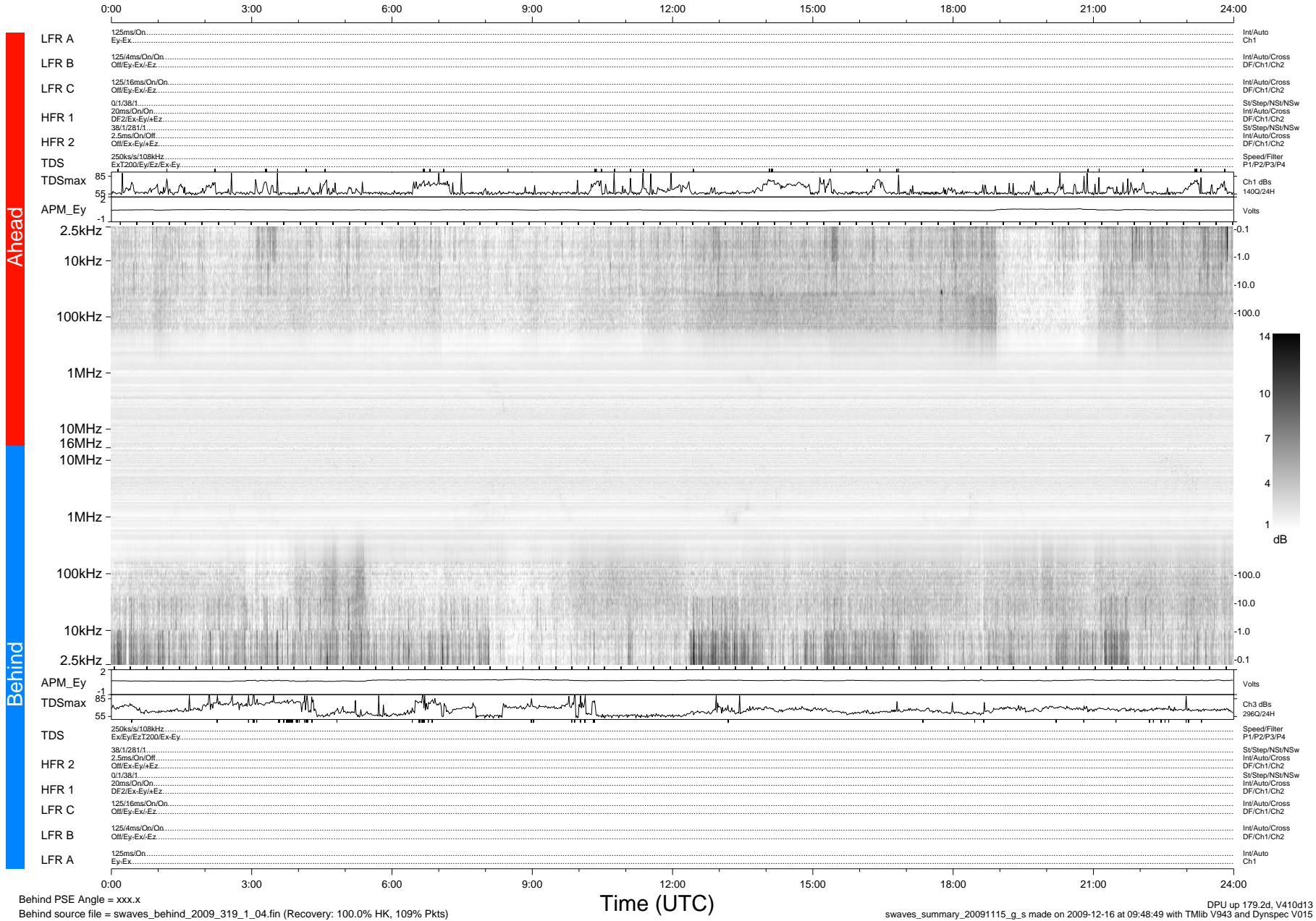


# STEREO/WAVES Daily Summary - 15-Nov-2009 (DOY 319)

Ahead source file = swaves\_ahead\_2009\_319\_1\_04.fin (Recovery:100.0% HK, 86% Pkts)  
 Ahead PSE Angle = xxx.x

DPU up 103.4d, V410d12



Behind PSE Angle = xxx.x  
 Behind source file = swaves\_behind\_2009\_319\_1\_04.fin (Recovery: 100.0% HK, 109% Pkts)

Time (UTC)

swaves\_summary\_20091115\_g\_s made on 2009-12-16 at 09:48:49 with TMIlib V943 and Dynspec V015  
 DPU up 179.2d, V410d13