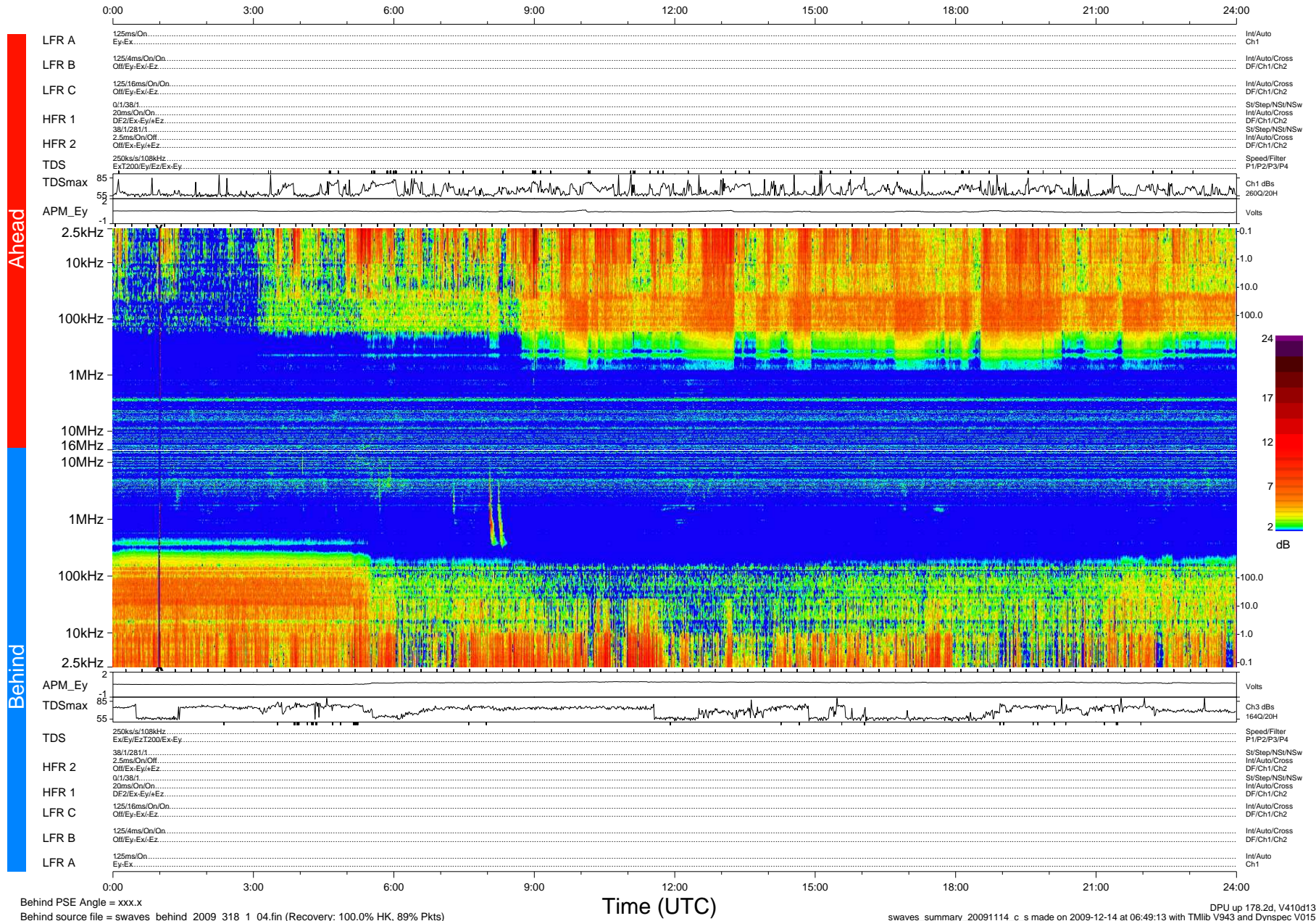


# STEREO/WAVES Daily Summary - 14-Nov-2009 (DOY 318)

Ahead source file = swaves\_ahead\_2009\_318\_1\_04.fin (Recovery:100.0% HK, 103% Pkts)  
 Ahead PSE Angle = xxx.x

DPU up 102.4d, V410d12



Behind PSE Angle = xxx.x  
 Behind source file = swaves\_behind\_2009\_318\_1\_04.fin (Recovery: 100.0% HK, 89% Pkts)

DPU up 178.2d, V410d13  
 swaves\_summary\_20091114\_c\_s made on 2009-12-14 at 06:49:13 with TMIb V943 and Dynspec V015