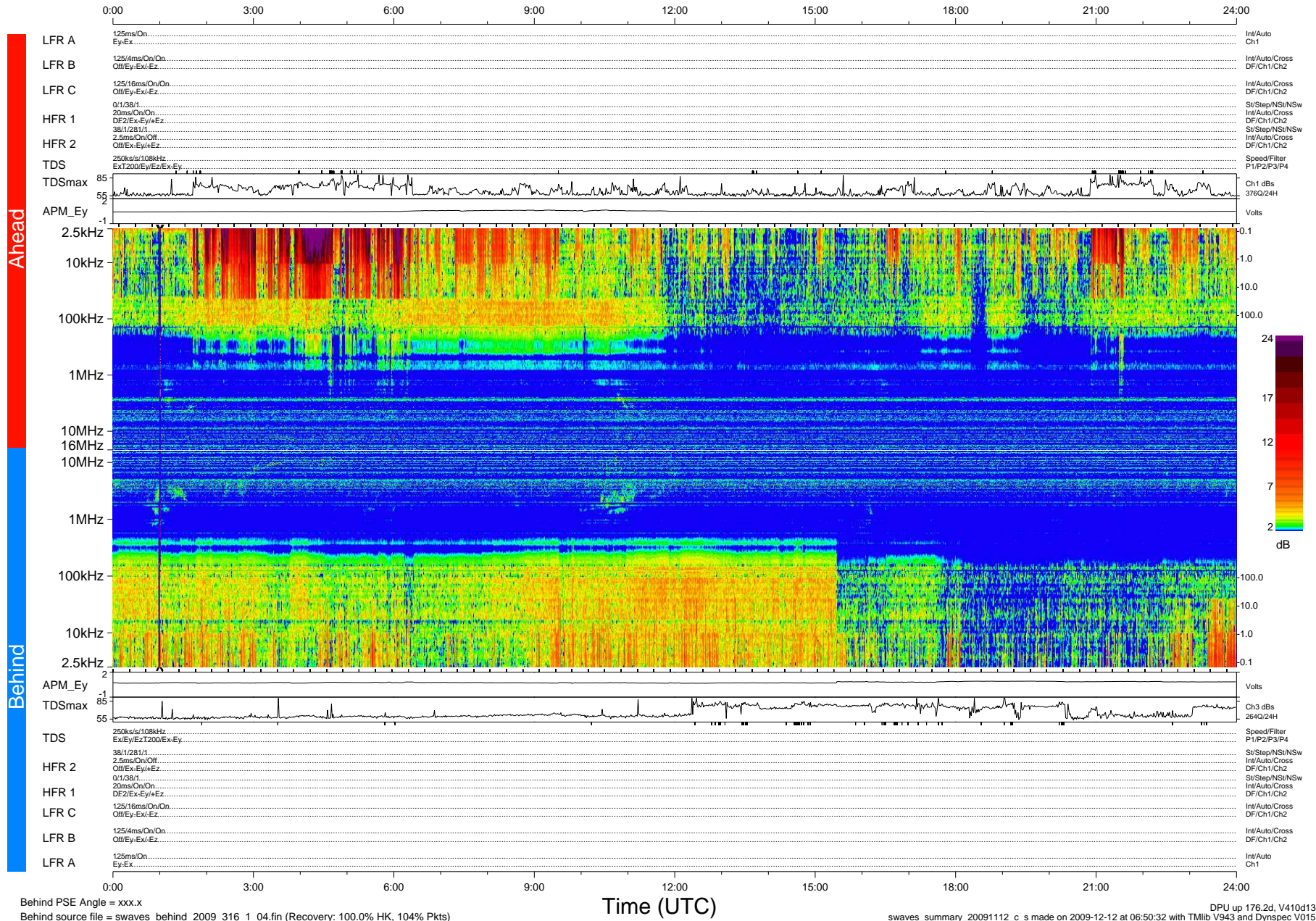


STEREO/WAVES Daily Summary - 12-Nov-2009 (DOY 316)

Ahead source file = swaves_ahead_2009_316_1_04.fin (Recovery:100.0% HK, 121% Pkts)
 Ahead PSE Angle = xxx.x

DPU up 100.4d, V410d12



Behind PSE Angle = xxx.x
 Behind source file = swaves_behind_2009_316_1_04.fin (Recovery: 100.0% HK, 104% Pkts)

DPU up 176.2d, V410d13
 swaves_summary_20091112_c_s made on 2009-12-12 at 06:50:32 with TMIlib V943 and Dynspec V015