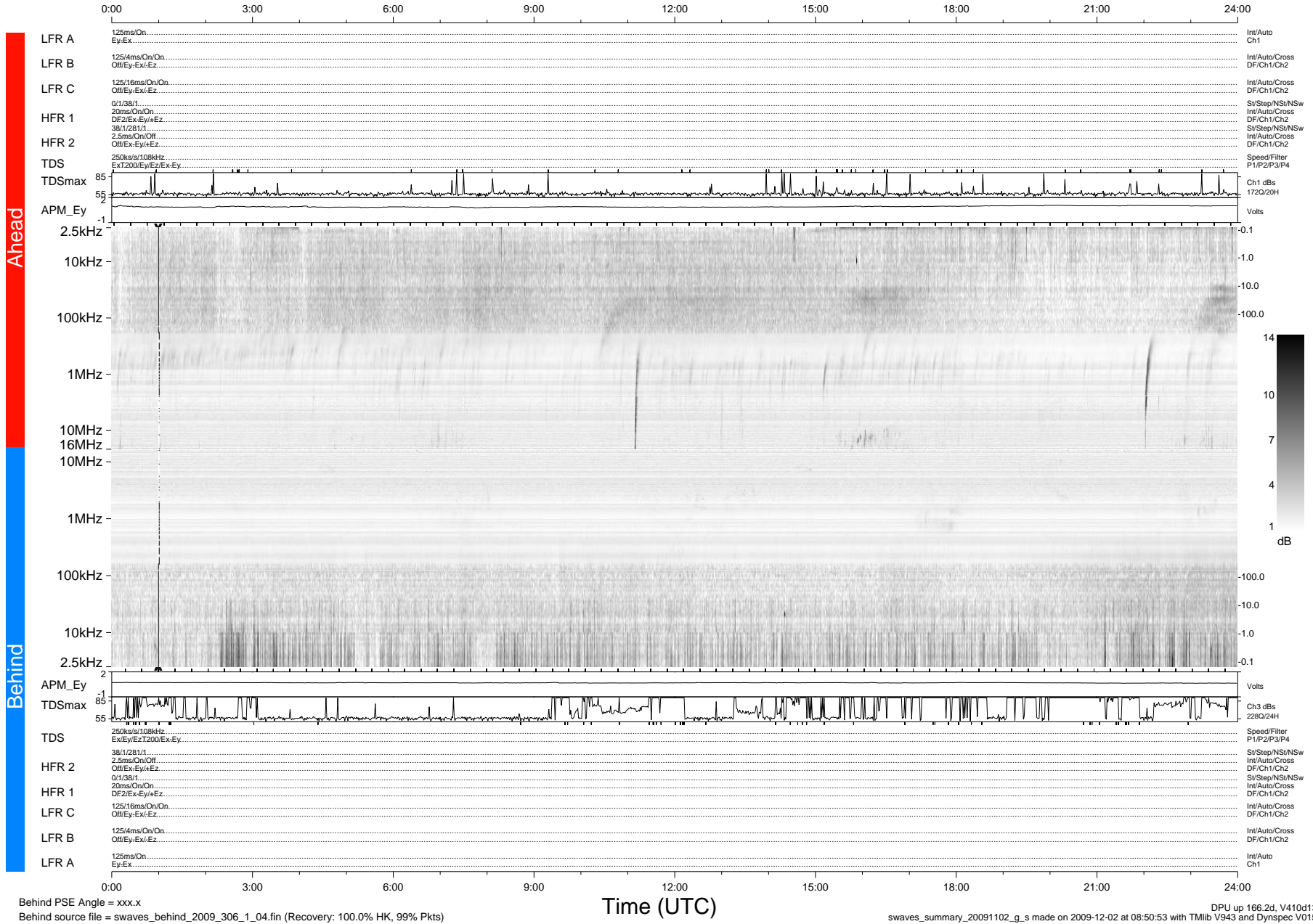


# STEREO/WAVES Daily Summary - 02-Nov-2009 (DOY 306)

Ahead source file = swaves\_ahead\_2009\_306\_1\_04.fin (Recovery:100.0% HK, 90% Pkts)  
 Ahead PSE Angle = xxx.x

DPU up 90.4d, V410d12



Behind PSE Angle = xxx.x  
 Behind source file = swaves\_behind\_2009\_306\_1\_04.fin (Recovery: 100.0% HK, 99% Pkts)

Time (UTC)

DPU up 166.2d, V410d13  
 swaves\_summary\_20091102\_g\_s made on 2009-12-02 at 08:50:53 with TMlib V943 and Dynspec V015