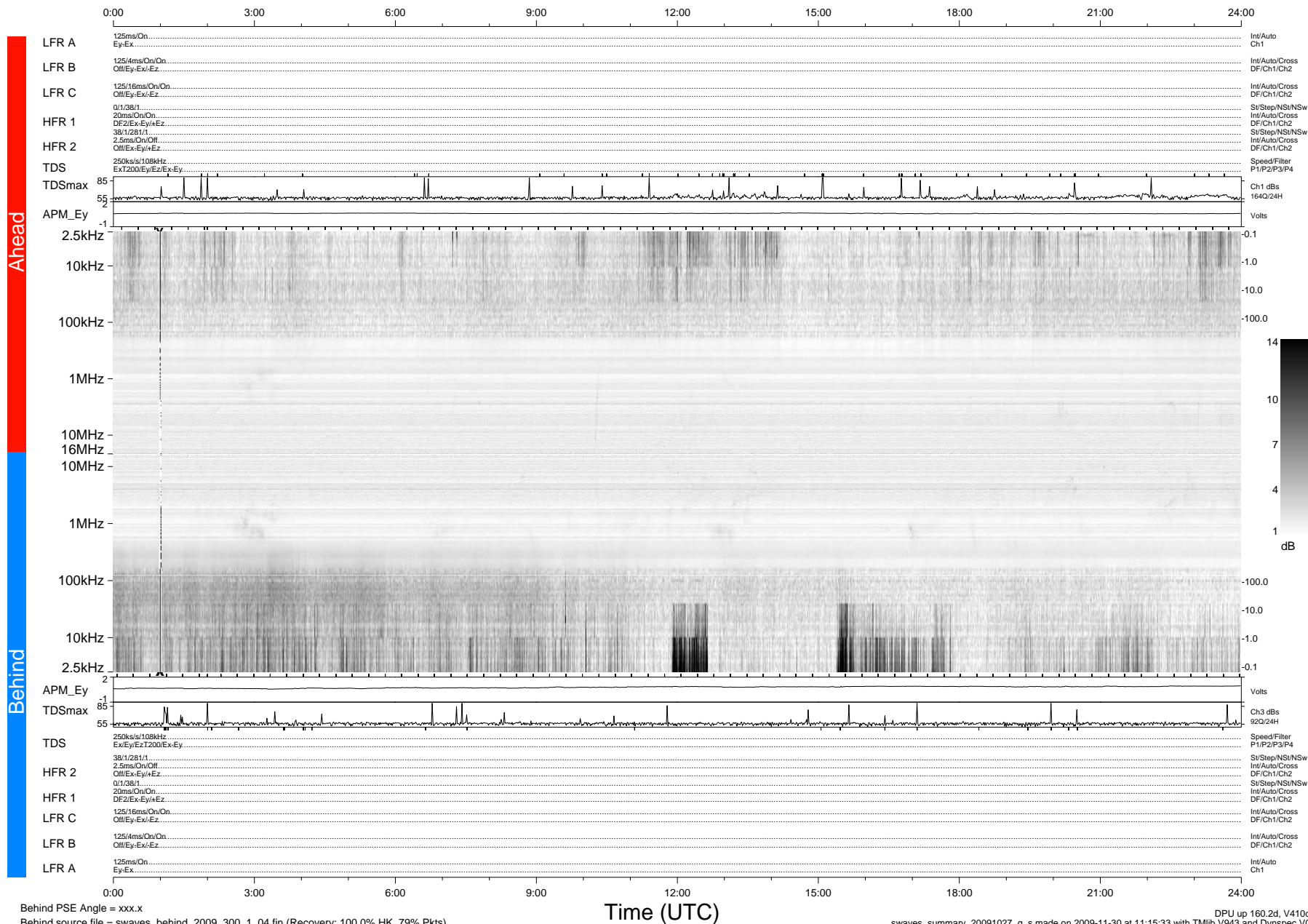


# STEREO/WAVES Daily Summary - 27-Oct-2009 (DOY 300)

Ahead source file = swaves\_ahead\_2009\_300\_1\_04.fin (Recovery:100.0% HK, 89% Pkts)  
 Ahead PSE Angle = xxx.x

DPU up 84.4d, V410d12



Behind PSE Angle = xxx.x  
 Behind source file = swaves\_behind\_2009\_300\_1\_04.fin (Recovery: 100.0% HK, 79% Pkts)

Time (UTC)

swaves\_summary\_20091027\_g\_s made on 2009-11-30 at 11:15:33 with TMlib V943 and Dynspec V015

DPU up 160.2d, V410d13