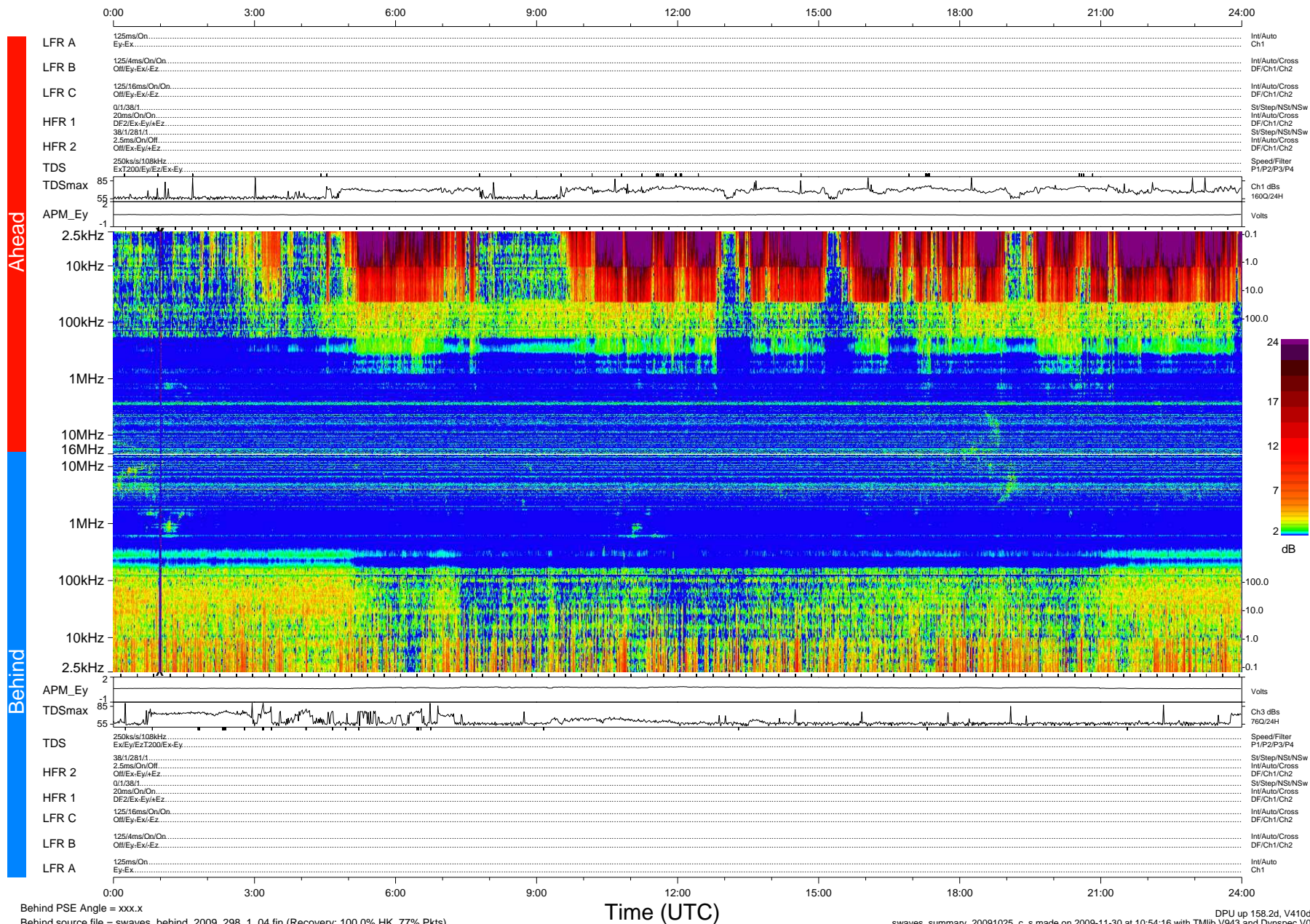


STEREO/WAVES Daily Summary - 25-Oct-2009 (DOY 298)

Ahead source file = swaves_ahead_2009_298_1_04.fin (Recovery:100.0% HK, 89% Pkts)
 Ahead PSE Angle = xxx.x

DPU up 82.4d, V410d12



Behind PSE Angle = xxx.x
 Behind source file = swaves_behind_2009_298_1_04.fin (Recovery: 100.0% HK, 77% Pkts)

Time (UTC)

DPU up 158.2d, V410d13
 swaves_summary_20091025_c_s made on 2009-11-30 at 10:54:16 with Tlib V943 and Dynspec V015