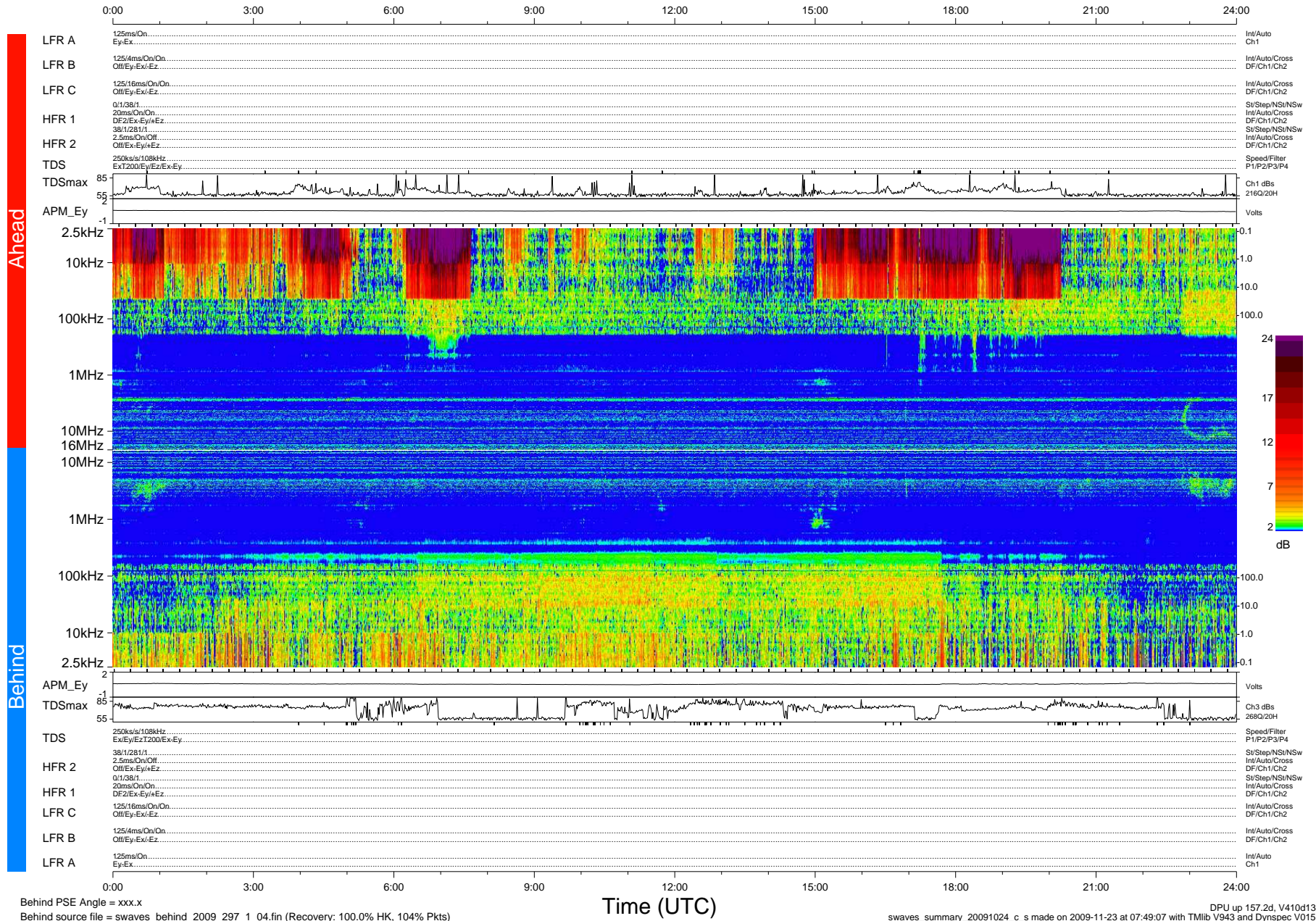


# STEREO/WAVES Daily Summary - 24-Oct-2009 (DOY 297)

Ahead source file = swaves\_ahead\_2009\_297\_1\_04.fin (Recovery:100.0% HK, 97% Pkts)  
 Ahead PSE Angle = xxx.x

DPU up 81.4d, V410d12



Behind PSE Angle = xxx.x  
 Behind source file = swaves\_behind\_2009\_297\_1\_04.fin (Recovery: 100.0% HK, 104% Pkts)

Time (UTC)

DPU up 157.2d, V410d13  
 swaves\_summary\_20091024\_c\_s made on 2009-11-23 at 07:49:07 with TMIlib V943 and Dynspec V015