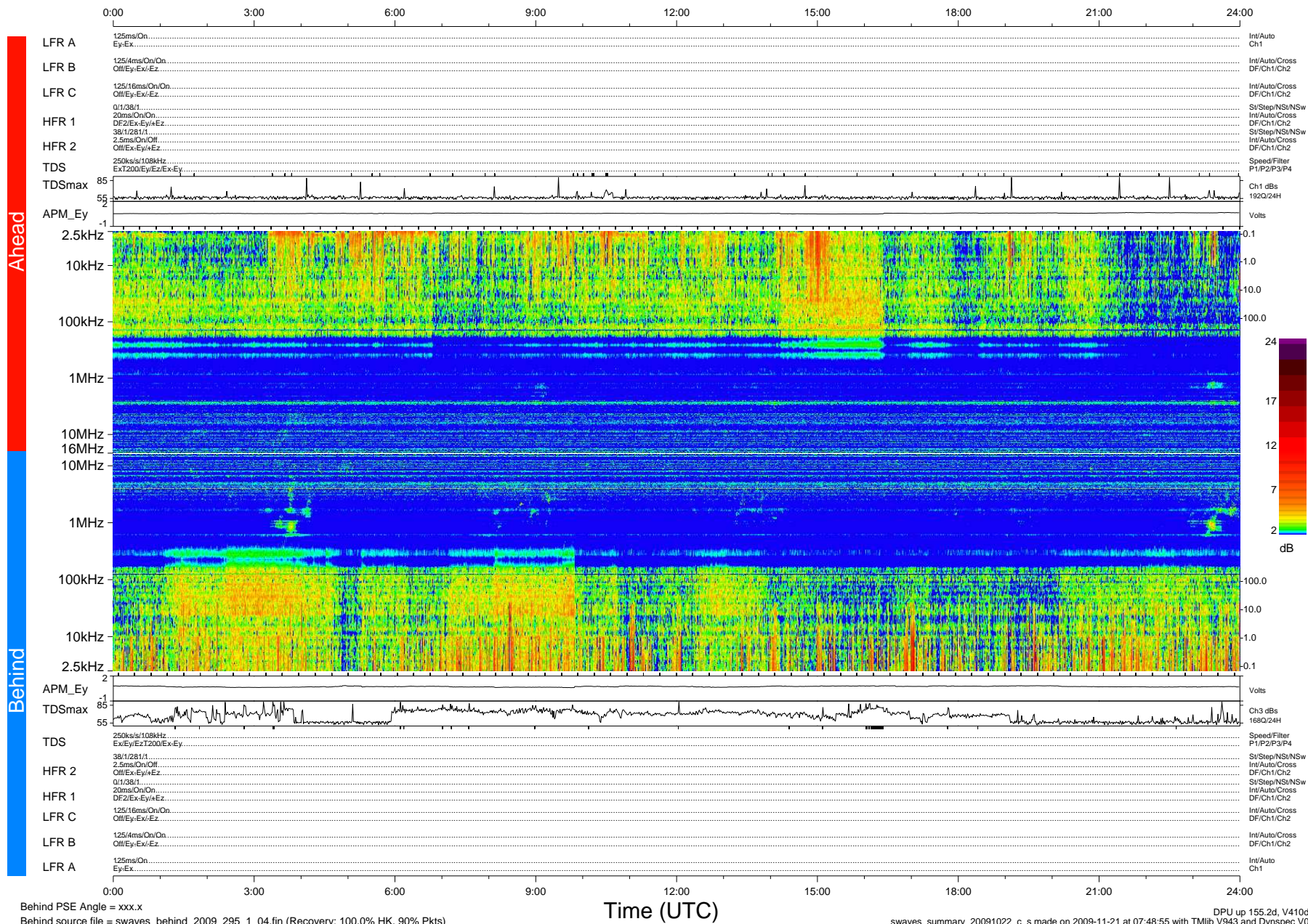


STEREO/WAVES Daily Summary - 22-Oct-2009 (DOY 295)

Ahead source file = swaves_ahead_2009_295_1_04.fin (Recovery:100.0% HK, 94% Pkts)
 Ahead PSE Angle = xxx.x

DPU up 79.4d, V410d12



Behind PSE Angle = xxx.x
 Behind source file = swaves_behind_2009_295_1_04.fin (Recovery: 100.0% HK, 90% Pkts)

Time (UTC)

DPU up 155.2d, V410d13
 swaves_summary_20091022_c_s made on 2009-11-21 at 07:48:55 with TMIlib V943 and Dynspec V015