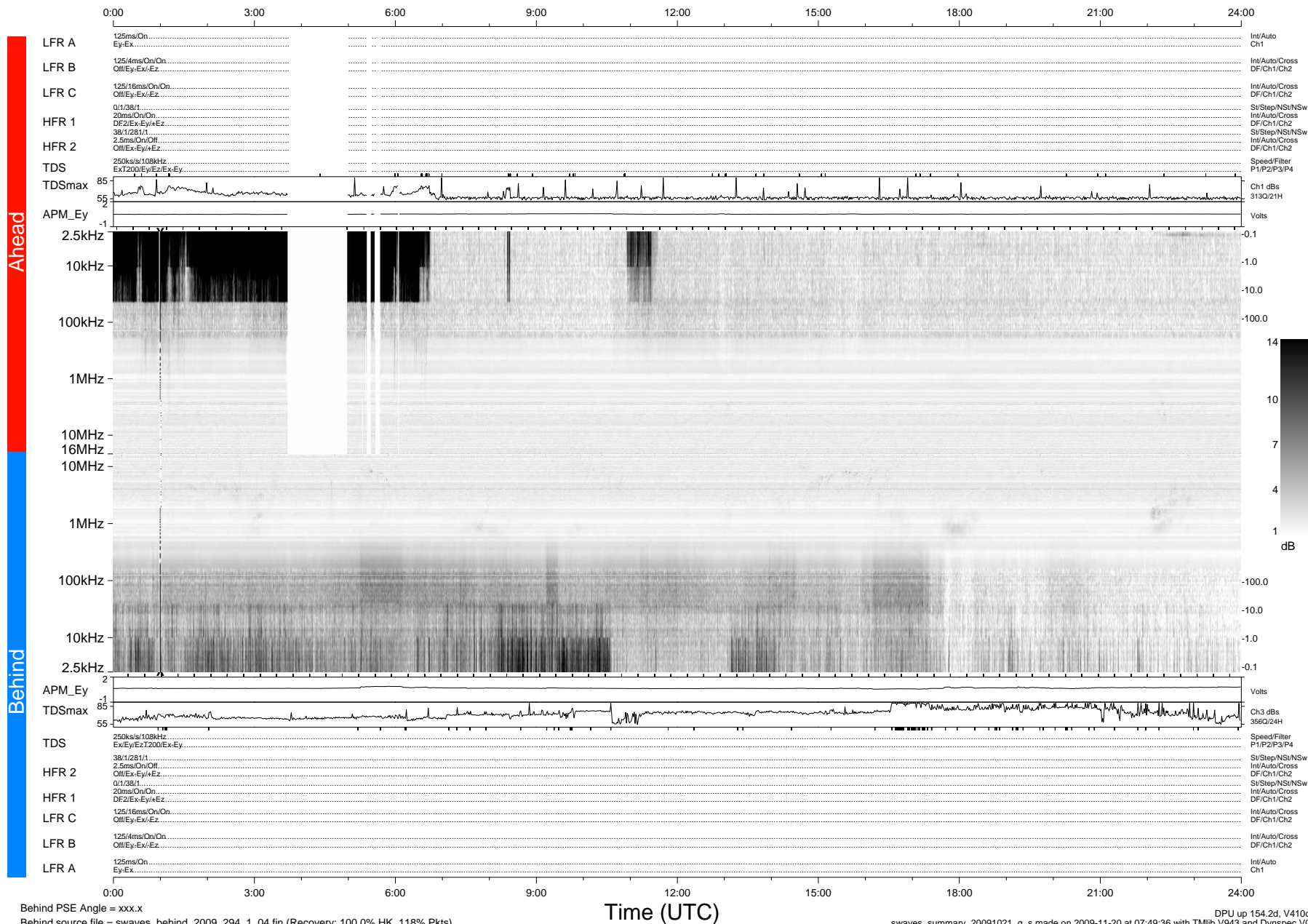


STEREO/WAVES Daily Summary - 21-Oct-2009 (DOY 294)

Ahead source file = swaves_ahead_2009_294_1_04.fin (Recovery:93.8% HK, 108% Pkts)
 Ahead PSE Angle = xxx.x

DPU up 78.4d, V410d12



Behind PSE Angle = xxx.x
 Behind source file = swaves_behind_2009_294_1_04.fin (Recovery: 100.0% HK, 118% Pkts)

Time (UTC)

DPU up 154.2d, V410d13
 swaves_summary_20091021_g_s made on 2009-11-20 at 07:49:36 with TMIb V943 and Dynspec V015