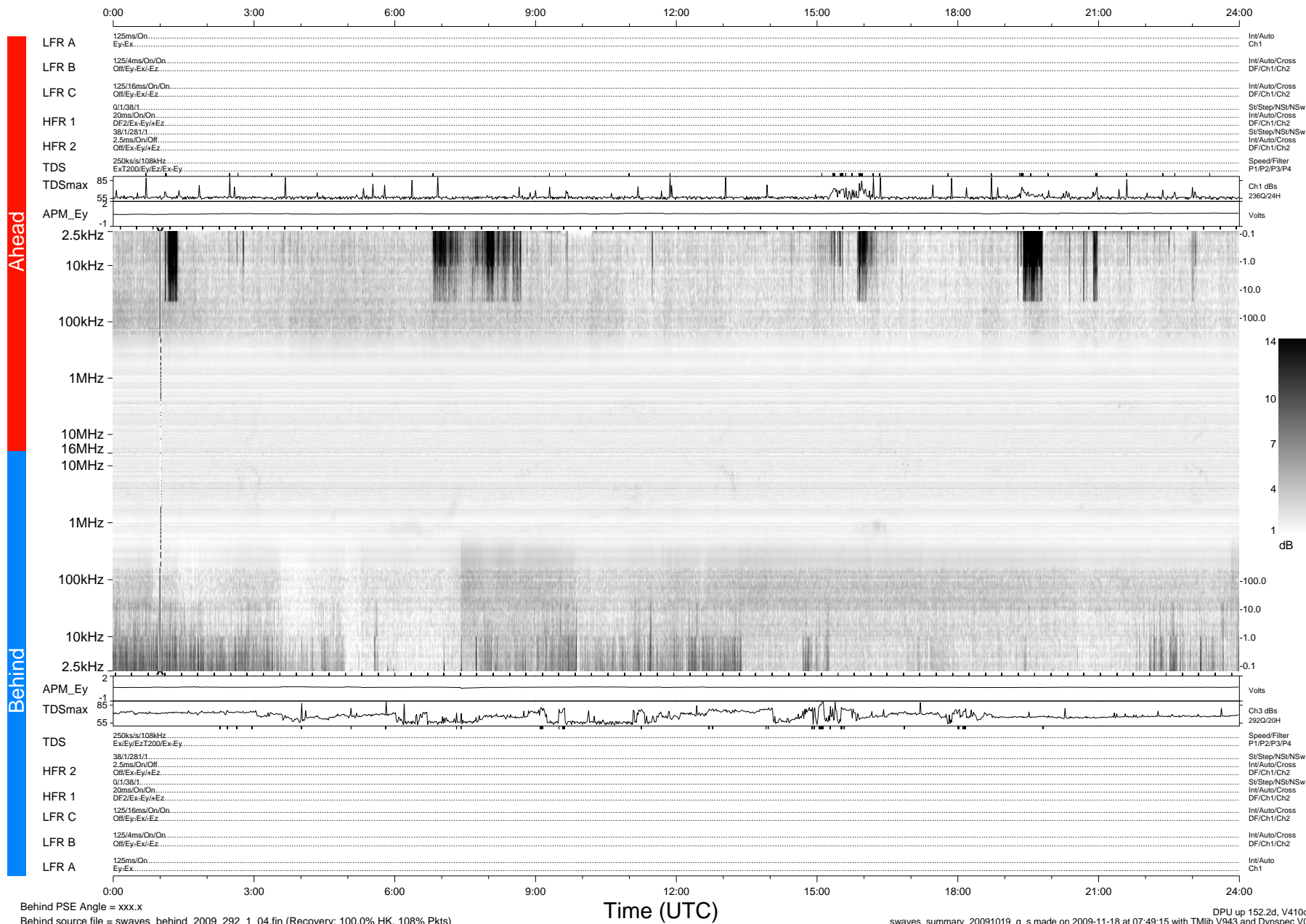


STEREO/WAVES Daily Summary - 19-Oct-2009 (DOY 292)

Ahead source file = swaves_ahead_2009_292_1_04.fin (Recovery:100.0% HK, 100% Pkts)
 Ahead PSE Angle = xxx.x

DPU up 76.4d, V410d12



Behind PSE Angle = xxx.x
 Behind source file = swaves_behind_2009_292_1_04.fin (Recovery: 100.0% HK, 108% Pkts)

DPU up 152.2d, V410d13
 swaves_summary_20091019_g_s made on 2009-11-18 at 07:49:15 with TMIb V943 and Dynspec V015