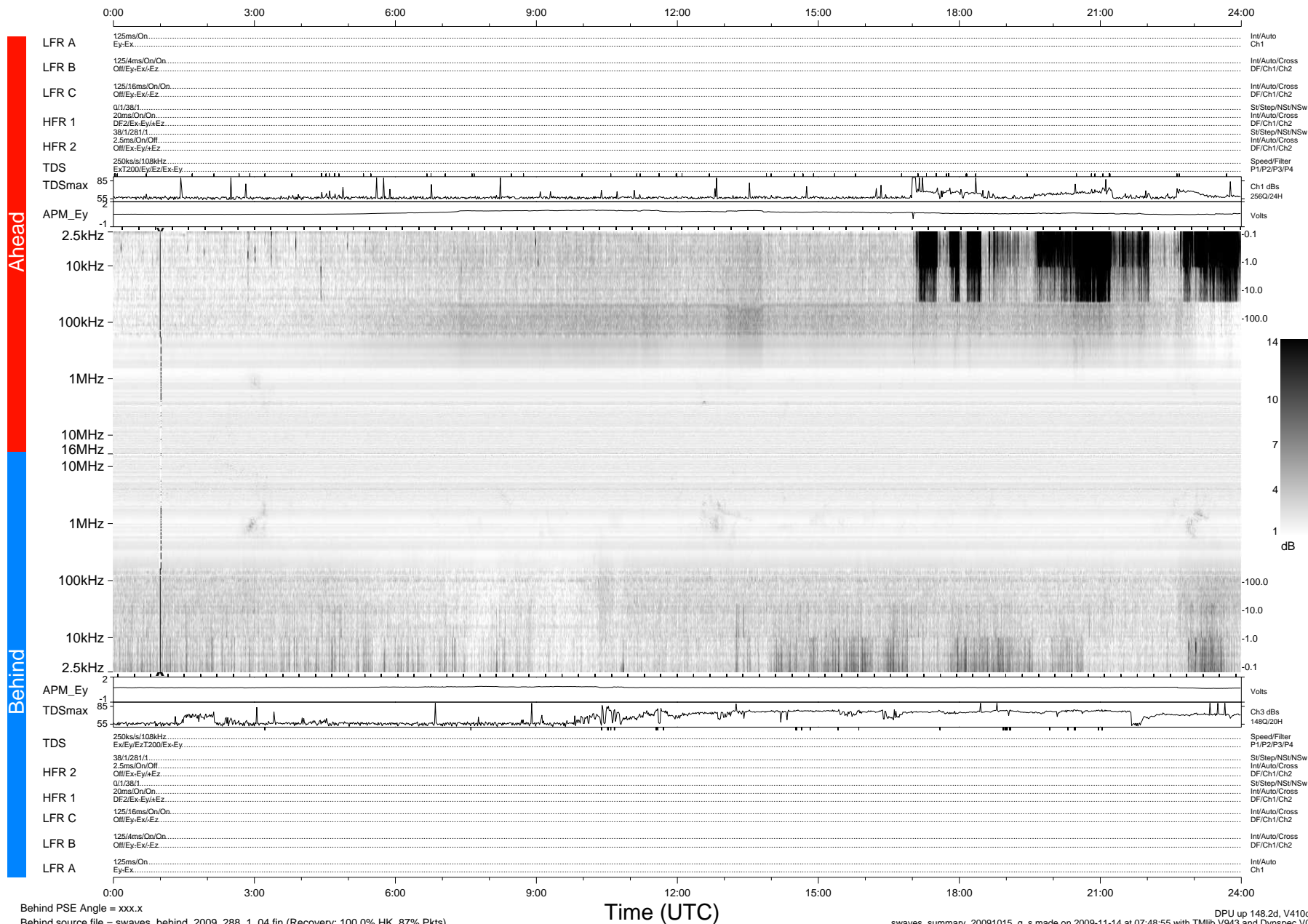


STEREO/WAVES Daily Summary - 15-Oct-2009 (DOY 288)

Ahead source file = swaves_ahead_2009_288_1_04.fin (Recovery:100.0% HK, 103% Pkts)
 Ahead PSE Angle = xxx.x

DPU up 72.4d, V410d12



Behind PSE Angle = xxx.x
 Behind source file = swaves_behind_2009_288_1_04.fin (Recovery: 100.0% HK, 87% Pkts)

Time (UTC)

DPU up 148.2d, V410d13
 swaves_summary_20091015_g_s made on 2009-11-14 at 07:48:55 with TMIib V943 and Dynspec V015