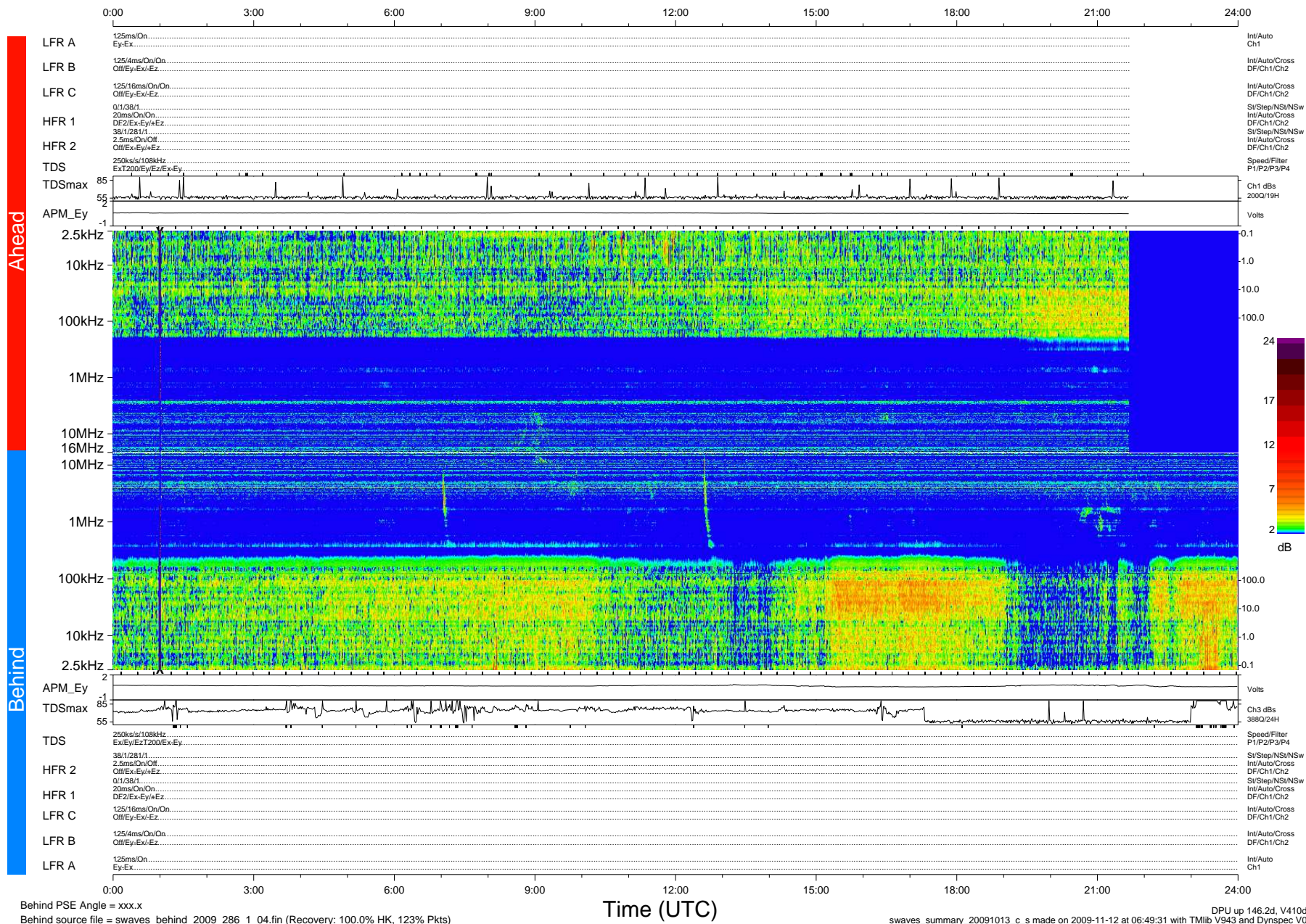


STEREO/WAVES Daily Summary - 13-Oct-2009 (DOY 286)

Ahead source file = swaves_ahead_2009_286_1_04.fin (Recovery:90.3% HK, 88% Pkts)
 Ahead PSE Angle = xxx.x

DPU up 70.3d, V410d12



Behind PSE Angle = xxx.x
 Behind source file = swaves_behind_2009_286_1_04.fin (Recovery: 100.0% HK, 123% Pkts)

Time (UTC)

DPU up 146.2d, V410d13
 swaves_summary_20091013_c_s made on 2009-11-12 at 06:49:31 with TMIlib V943 and Dynspec V015