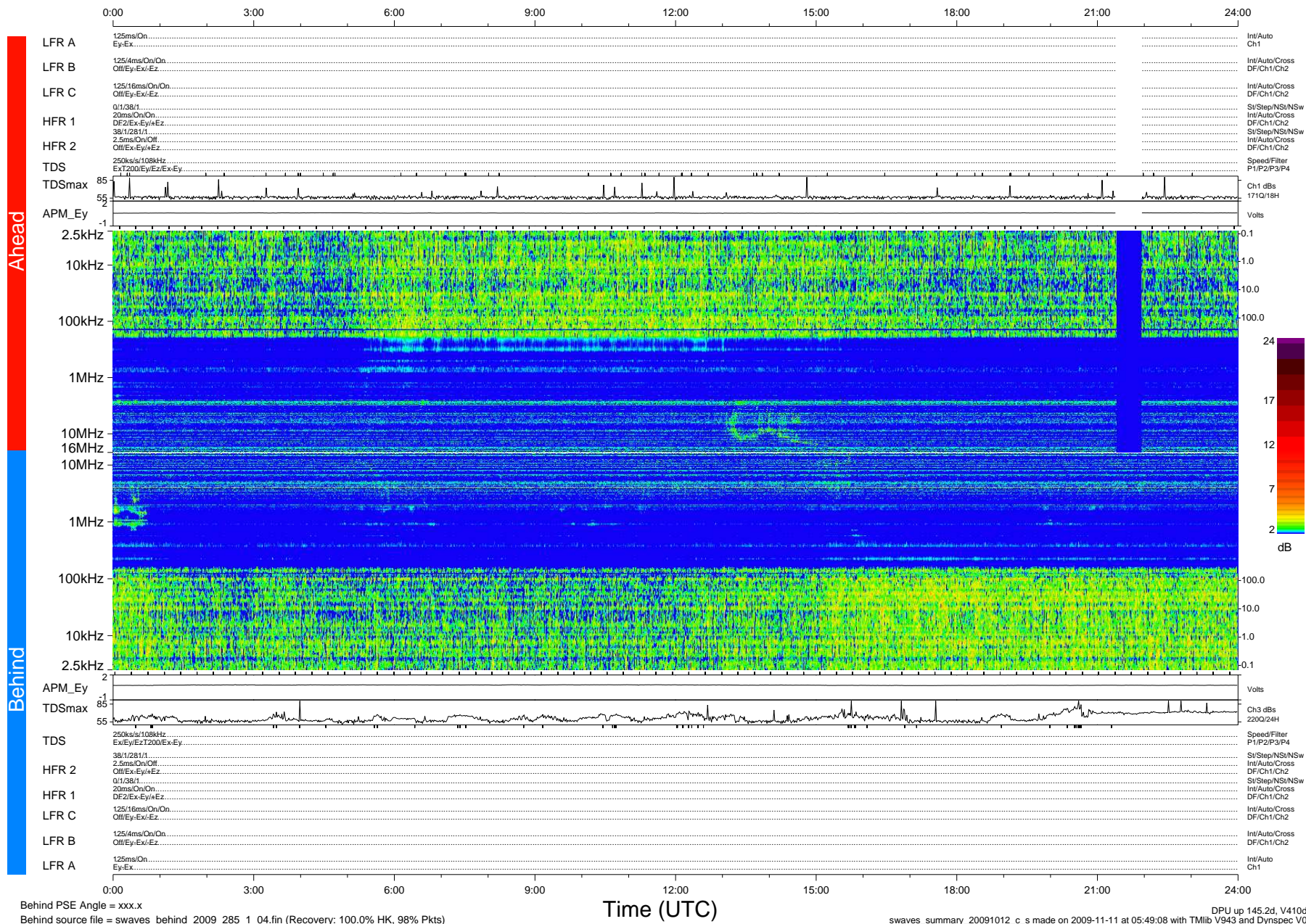


STEREO/WAVES Daily Summary - 12-Oct-2009 (DOY 285)

Ahead source file = swaves_ahead_2009_285_1_04.fin (Recovery:97.7% HK, 89% Pkts)
 Ahead PSE Angle = xxx.x

DPU up 69.4d, V410d12



Behind PSE Angle = xxx.x

Behind source file = swaves_behind_2009_285_1_04.fin (Recovery: 100.0% HK, 98% Pkts)

Time (UTC)

DPU up 145.2d, V410d13
 swaves_summary_20091012_c_s made on 2009-11-11 at 05:49:08 with TMIlib V943 and Dynspec V015