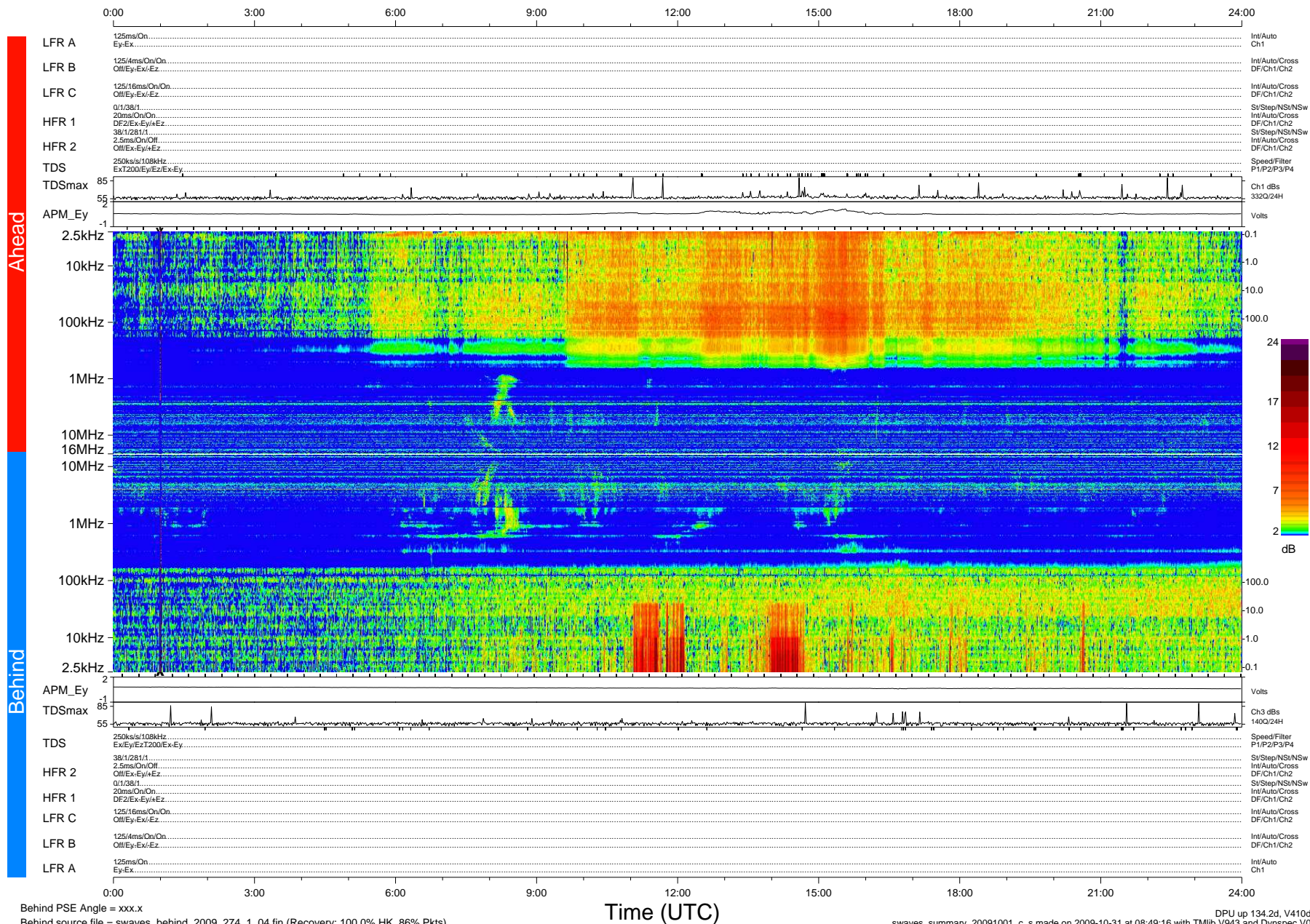


STEREO/WAVES Daily Summary - 01-Oct-2009 (DOY 274)

Ahead source file = swaves_ahead_2009_274_1_04.fin (Recovery:100.0% HK, 114% Pkts)
 Ahead PSE Angle = xxx.x

DPU up 58.4d, V410d12



Behind PSE Angle = xxx.x
 Behind source file = swaves_behind_2009_274_1_04.fin (Recovery: 100.0% HK, 86% Pkts)

Time (UTC)

DPU up 134.2d, V410d13
 swaves_summary_20091001_c_s made on 2009-10-31 at 08:49:16 with TMIb V943 and Dynspec V015