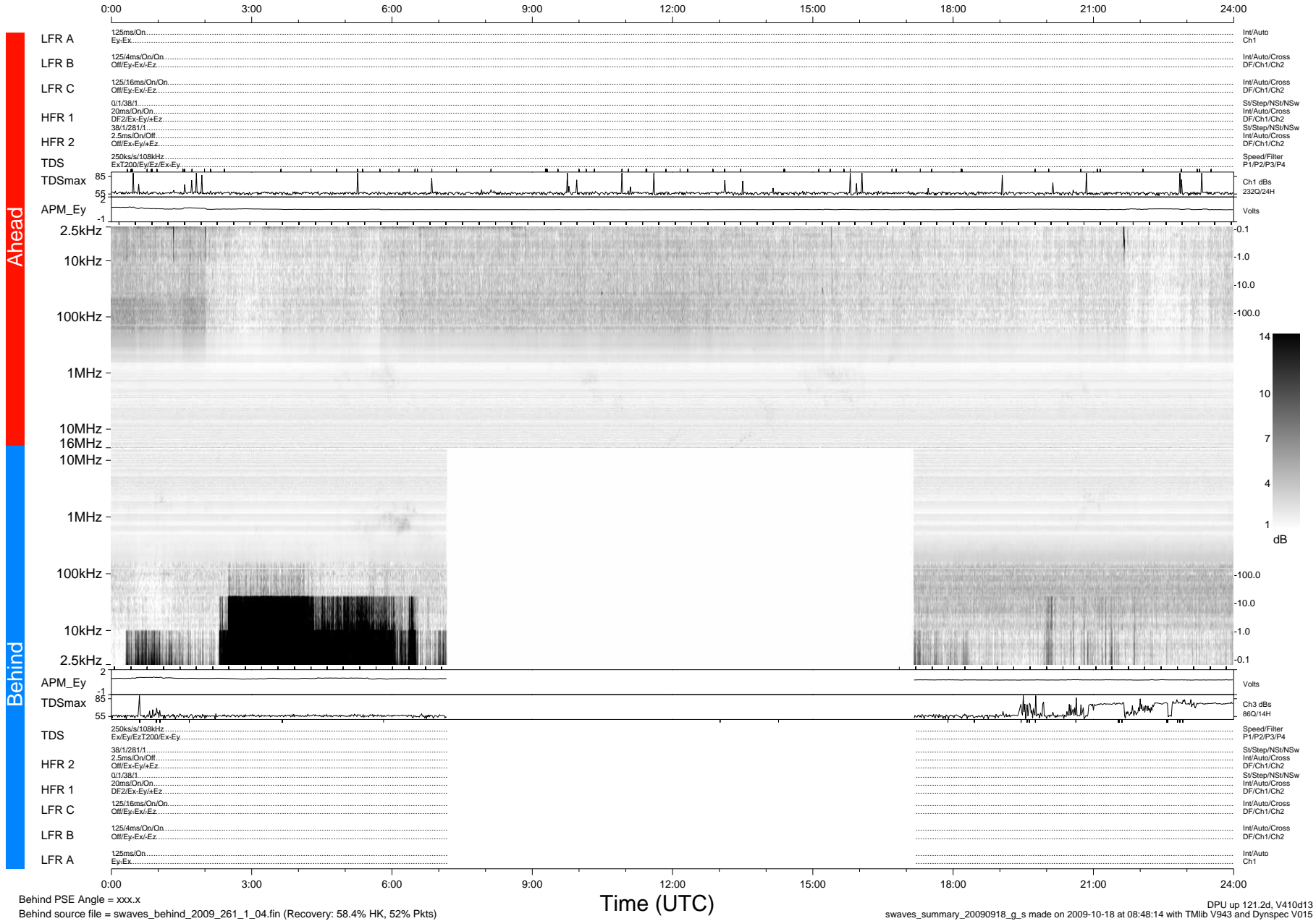


STEREO/WAVES Daily Summary - 18-Sep-2009 (DOY 261)

Ahead source file = swaves_ahead_2009_261_1_04.fin (Recovery:100.0% HK, 100% Pkts)
 Ahead PSE Angle = xxx.x

DPU up 45.4d, V410d12



Behind PSE Angle = xxx.x
 Behind source file = swaves_behind_2009_261_1_04.fin (Recovery: 58.4% HK, 52% Pkts)

Time (UTC)

DPU up 121.2d, V410d13
 swaves_summary_20090918_g_s made on 2009-10-18 at 08:48:14 with TMIib V943 and Dynspec V015