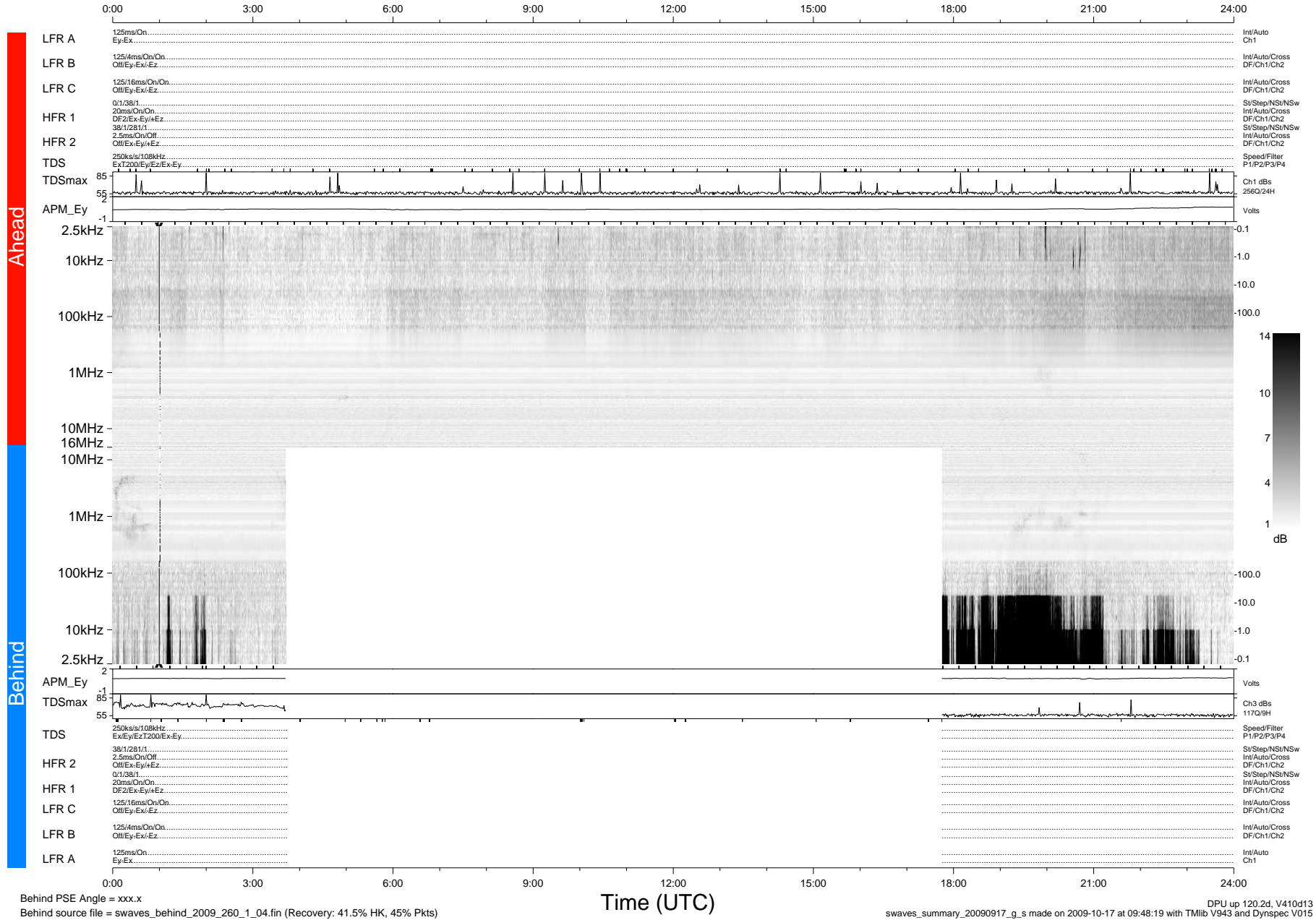


STEREO/WAVES Daily Summary - 17-Sep-2009 (DOY 260)

Ahead source file = swaves_ahead_2009_260_1_04.fin (Recovery:100.0% HK, 103% Pkts)
 Ahead PSE Angle = xxx.x

DPU up 44.4d, V410d12



Behind PSE Angle = xxx.x
 Behind source file = swaves_behind_2009_260_1_04.fin (Recovery: 41.5% HK, 45% Pkts)

DPU up 120.2d, V410d13
 swaves_summary_20090917_g_s made on 2009-10-17 at 09:48:19 with TMIib V943 and Dynspec V015