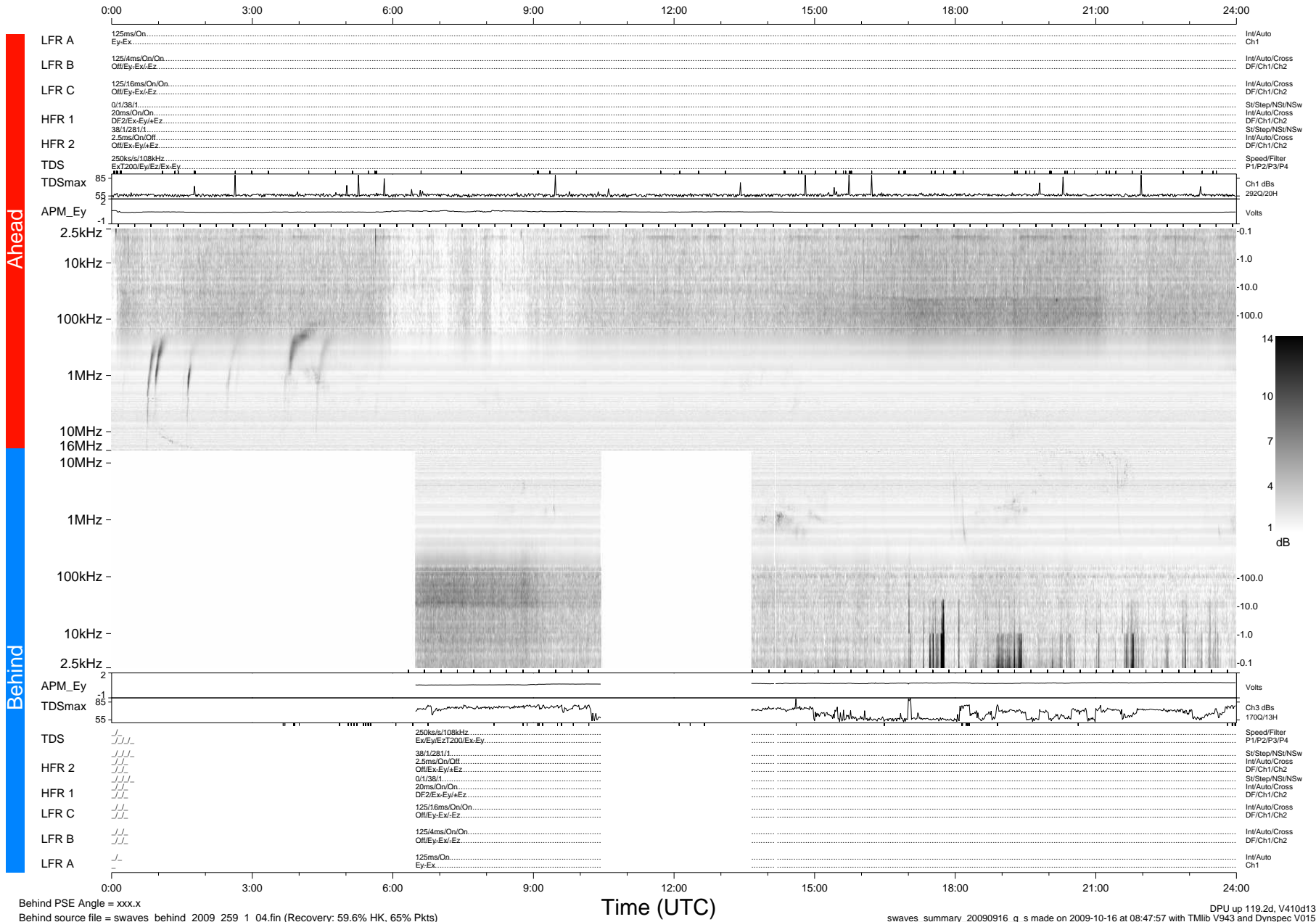


# STEREO/WAVES Daily Summary - 16-Sep-2009 (DOY 259)

Ahead source file = swaves\_ahead\_2009\_259\_1\_04.fin (Recovery:100.0% HK, 108% Pkts)  
 Ahead PSE Angle = xxx.x

DPU up 43.4d, V410d12



Behind PSE Angle = xxx.x  
 Behind source file = swaves\_behind\_2009\_259\_1\_04.fin (Recovery: 59.6% HK, 65% Pkts)

DPU up 119.2d, V410d13  
 swaves\_summary\_20090916\_g\_s made on 2009-10-16 at 08:47:57 with TMIlib V943 and Dynspec V015