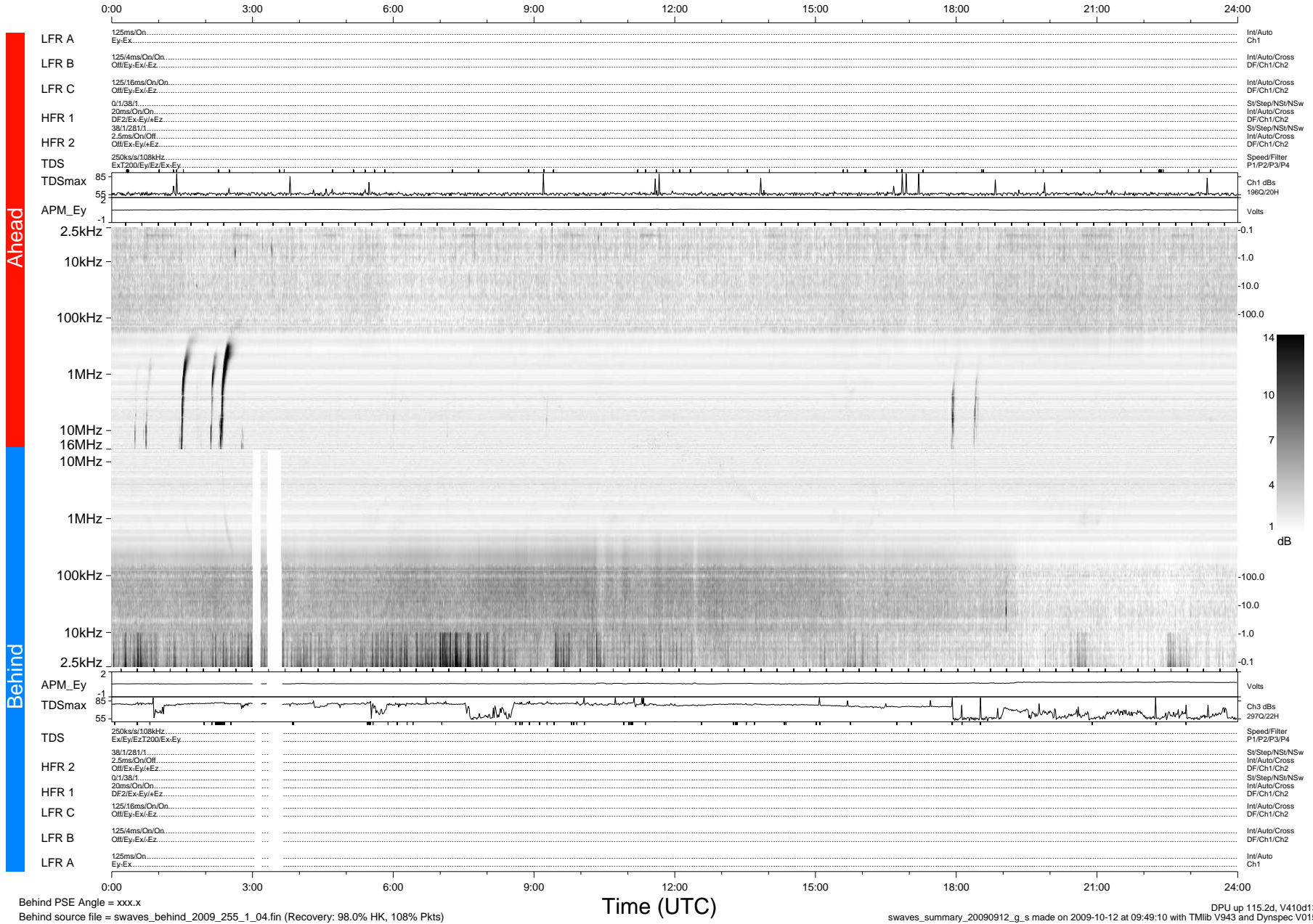


STEREO/WAVES Daily Summary - 12-Sep-2009 (DOY 255)

Ahead source file = swaves_ahead_2009_255_1_04.fin (Recovery:100.0% HK, 94% Pkts)
 Ahead PSE Angle = xxx.x

DPU up 39.4d, V410d12



Behind PSE Angle = xxx.x
 Behind source file = swaves_behind_2009_255_1_04.fin (Recovery: 98.0% HK, 108% Pkts)

Time (UTC)

DPU up 115.2d, V410d13
 swaves_summary_20090912_g_s made on 2009-10-12 at 09:49:10 with TMIlib V943 and Dynspec V015