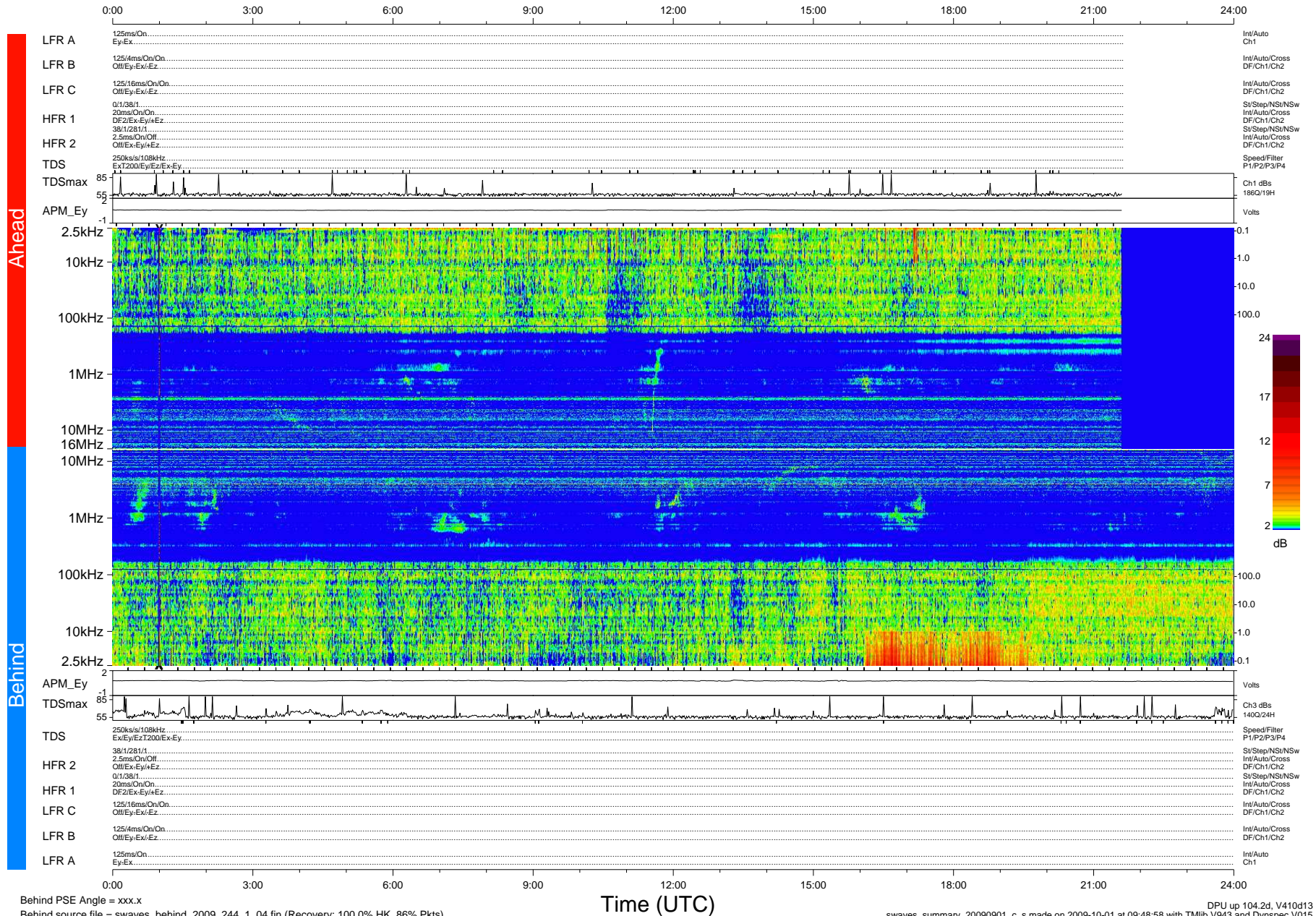


STEREO/WAVES Daily Summary - 01-Sep-2009 (DOY 244)

Ahead source file = swaves_ahead_2009_244_1_04.fin (Recovery:90.1% HK, 86% Pkts)
 Ahead PSE Angle = xxx.x

DPU up 28.3d, V410d12



Behind PSE Angle = xxx.x
 Behind source file = swaves_behind_2009_244_1_04.fin (Recovery: 100.0% HK, 86% Pkts)

Time (UTC)

DPU up 104.2d, V410d13
 swaves_summary_20090901_c_s made on 2009-10-01 at 09:48:58 with TMIb V943 and Dynspec V015