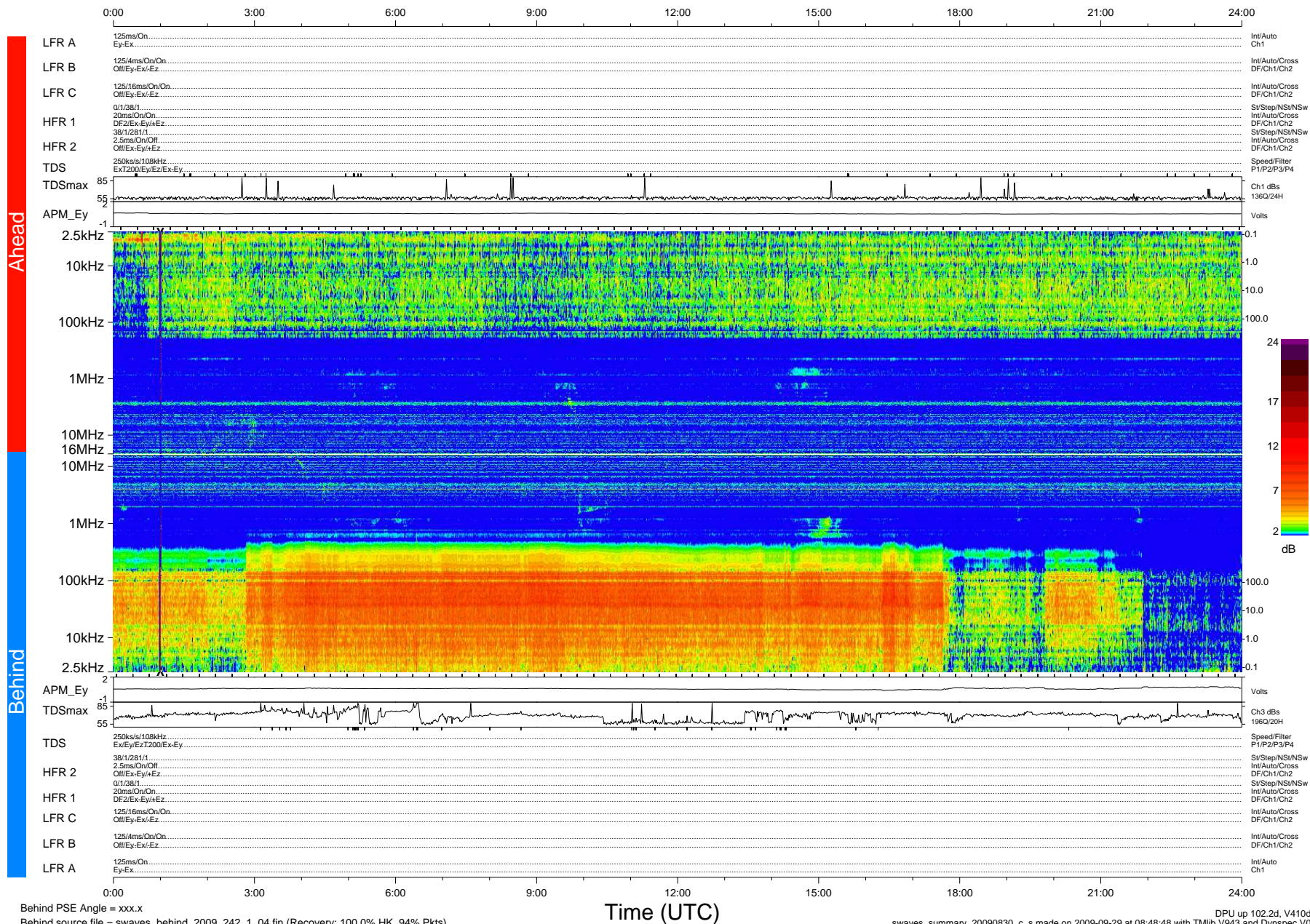


# STEREO/WAVES Daily Summary - 30-Aug-2009 (DOY 242)

Ahead source file = swaves\_ahead\_2009\_242\_1\_04.fin (Recovery:100.0% HK, 86% Pkts)  
 Ahead PSE Angle = xxx.x

DPU up 26.4d, V410d12



Behind PSE Angle = xxx.x  
 Behind source file = swaves\_behind\_2009\_242\_1\_04.fin (Recovery: 100.0% HK, 94% Pkts)

Time (UTC)

DPU up 102.2d, V410d13  
 swaves\_summary\_20090830\_c\_s made on 2009-09-29 at 08:48:48 with TMIb V943 and Dynspec V015