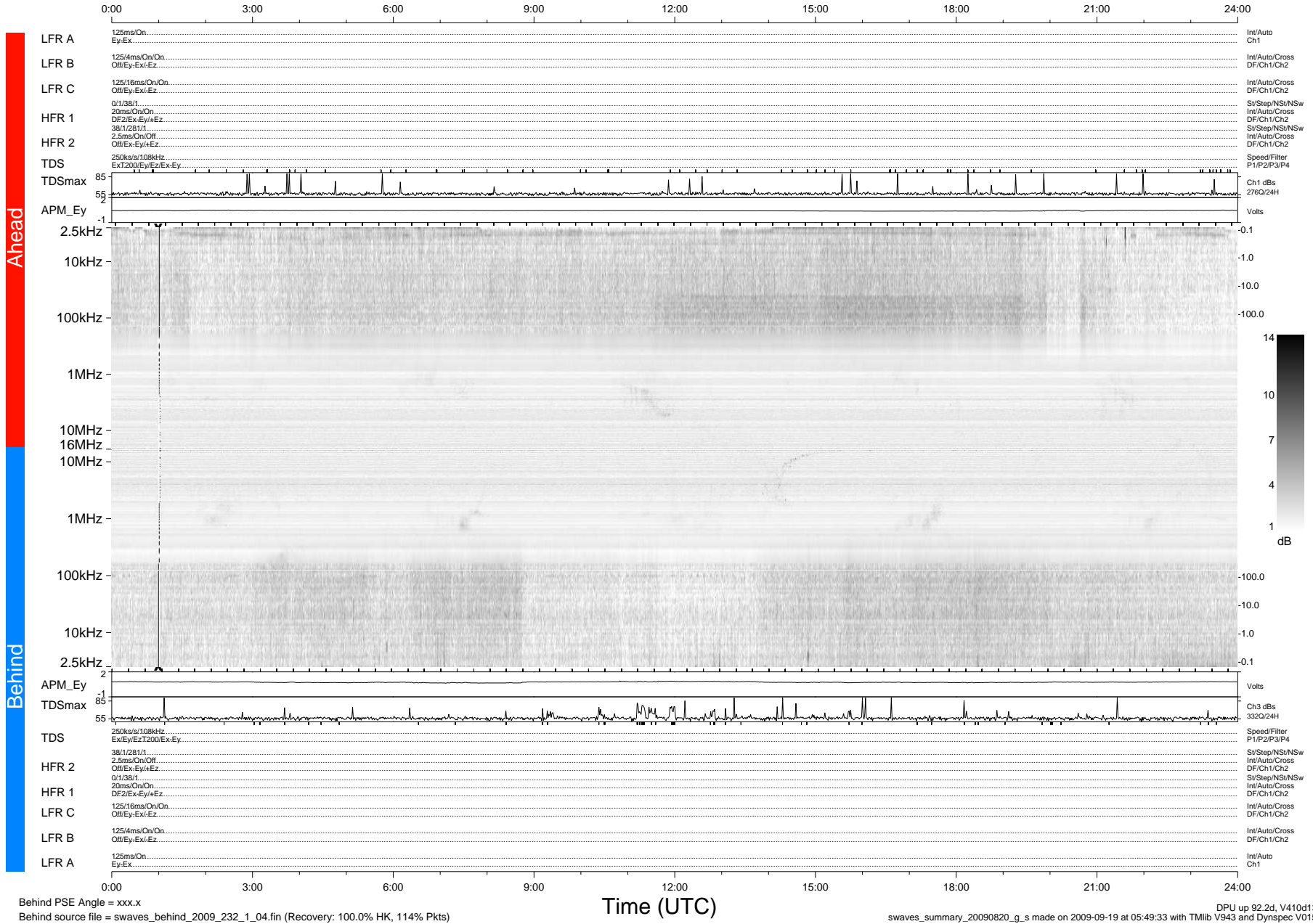


# STEREO/WAVES Daily Summary - 20-Aug-2009 (DOY 232)

Ahead source file = swaves\_ahead\_2009\_232\_1\_04.fin (Recovery:100.0% HK, 106% Pkts)  
 Ahead PSE Angle = xxx.x

DPU up 16.4d, V410d12



Behind PSE Angle = xxx.x  
 Behind source file = swaves\_behind\_2009\_232\_1\_04.fin (Recovery: 100.0% HK, 114% Pkts)

Time (UTC)

swaves\_summary\_20090820\_g\_s made on 2009-09-19 at 05:49:33 with TMlib V943 and Dynspec V015  
 DPU up 92.2d, V410d13