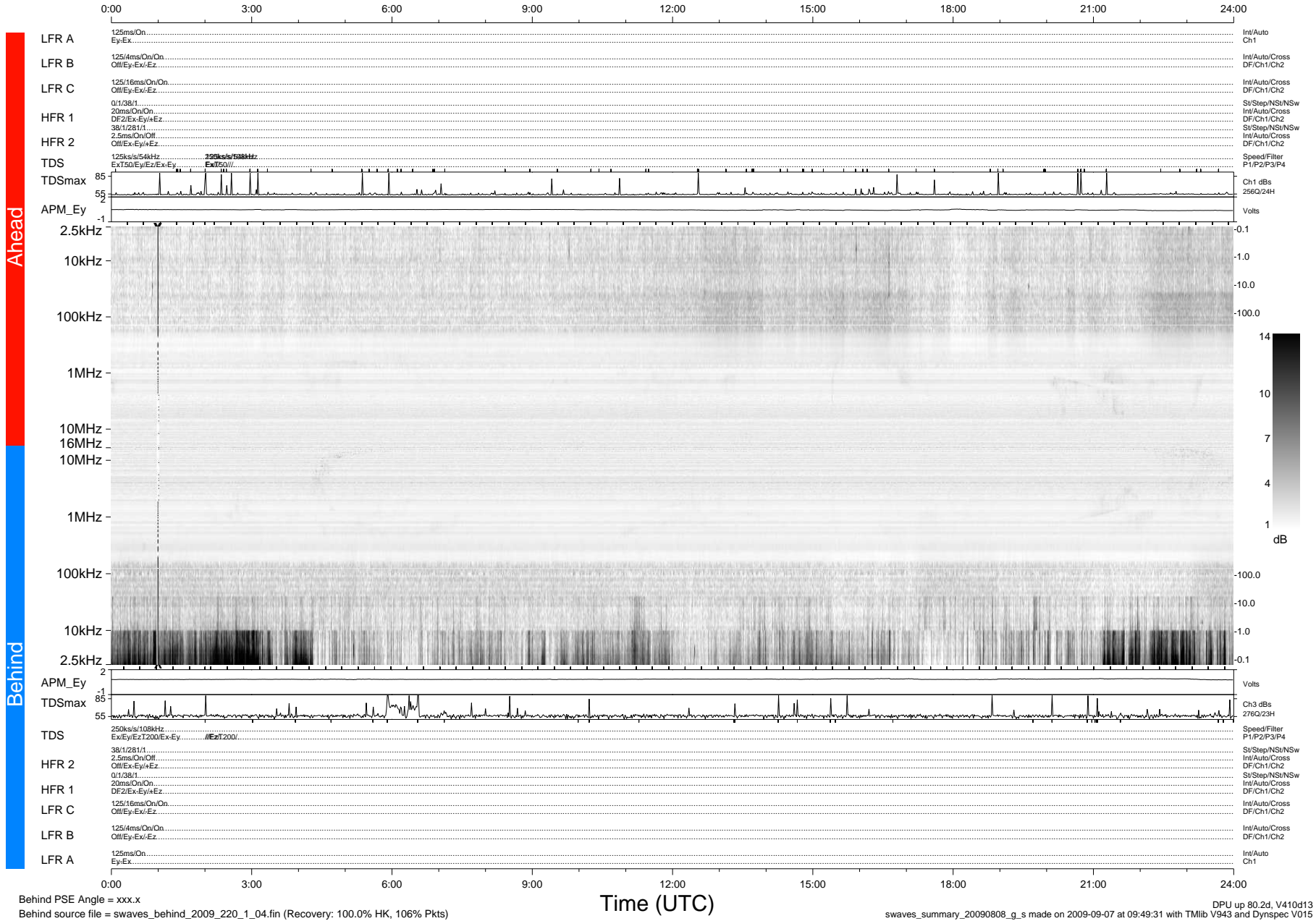


# STEREO/WAVES Daily Summary - 08-Aug-2009 (DOY 220)

Ahead source file = swaves\_ahead\_2009\_220\_1\_04.fin (Recovery:100.0% HK, 103% Pkts)  
 Ahead PSE Angle = xxx.x

DPU up 4.4d, V410d6



Behind PSE Angle = xxx.x  
 Behind source file = swaves\_behind\_2009\_220\_1\_04.fin (Recovery: 100.0% HK, 106% Pkts)

Time (UTC)

swaves\_summary\_20090808\_g\_s made on 2009-09-07 at 09:49:31 with TMIlib V943 and Dynspec V015  
 DPU up 80.2d, V410d13