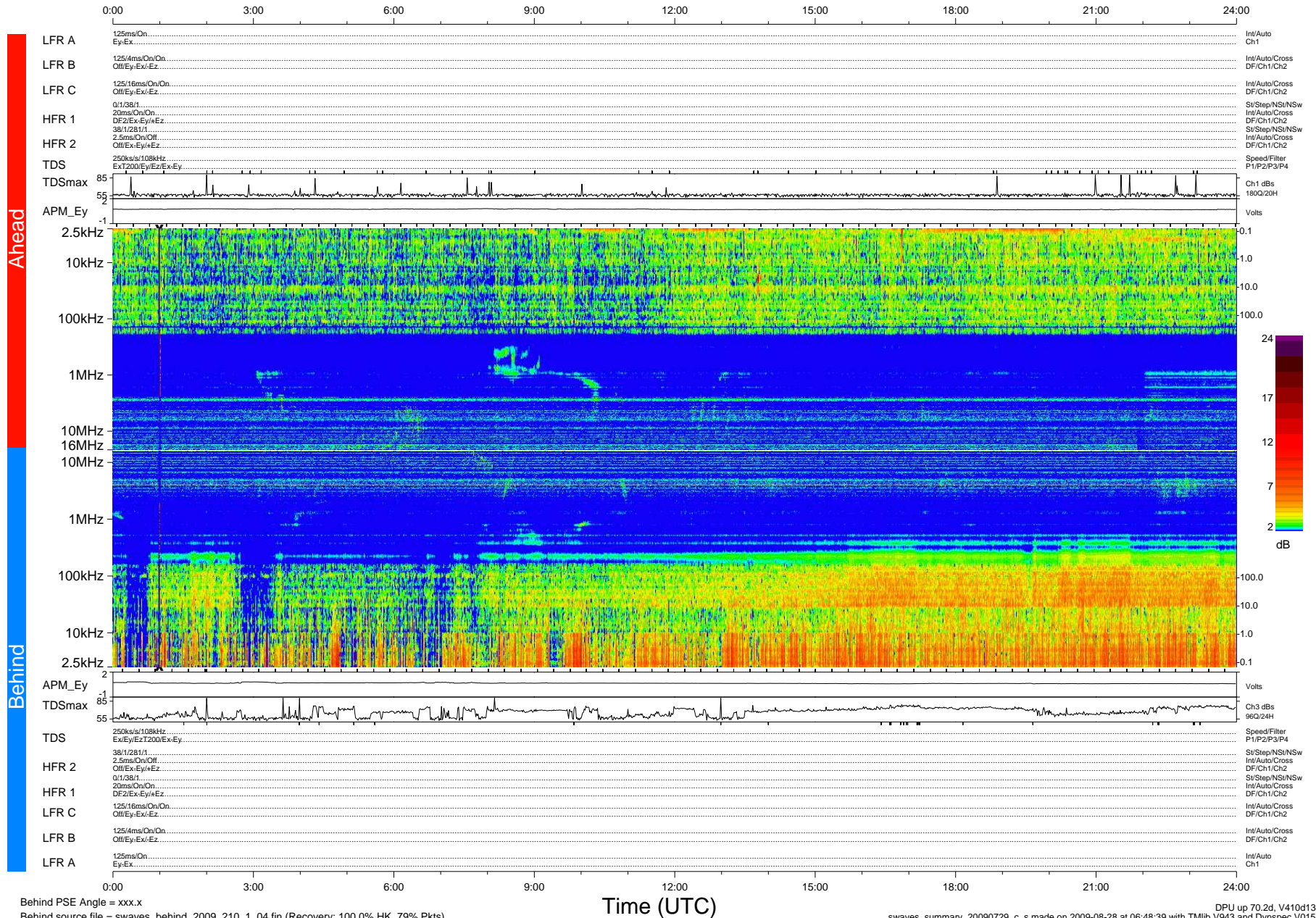


STEREO/WAVES Daily Summary - 29-Jul-2009 (DOY 210)

Ahead source file = swaves_ahead_2009_210_1_04.fin (Recovery:100.0% HK, 91% Pkts)
 Ahead PSE Angle = xxx.x

DPU up 70.1d, V410d12



Behind PSE Angle = xxx.x
 Behind source file = swaves_behind_2009_210_1_04.fin (Recovery: 100.0% HK, 79% Pkts)

DPU up 70.2d, V410d13
 swaves_summary_20090729_c_s made on 2009-08-28 at 06:48:39 with TMIb V943 and Dynspec V015