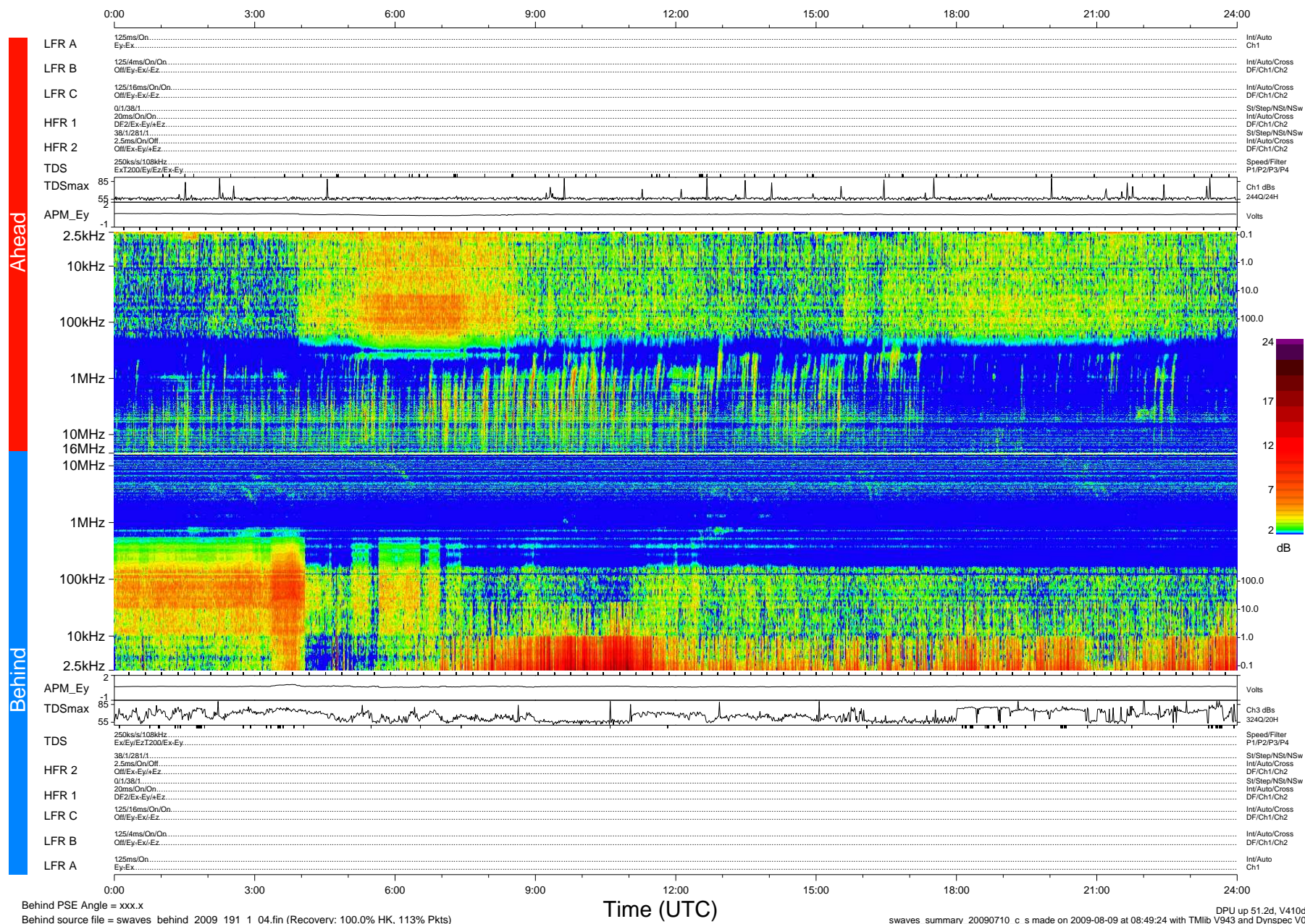


Ahead source file = swaves_ahead_2009_191_1_04.fin (Recovery:100.0% HK, 102% Pkts)
Ahead PSE Angle = xxx.x

DPU up 51.1d, V410d12



Behind PSE Angle = xxx.x
Behind source file = swaves_behind_2009_191_1_04.fin (Recovery: 100.0% HK, 113% Pkts)

DPU up 51.2d, V410d13
swaves_summary_20090710_c.s made on 2009-08-09 at 08:49:24 with TMLib V943 and Dynspec V015