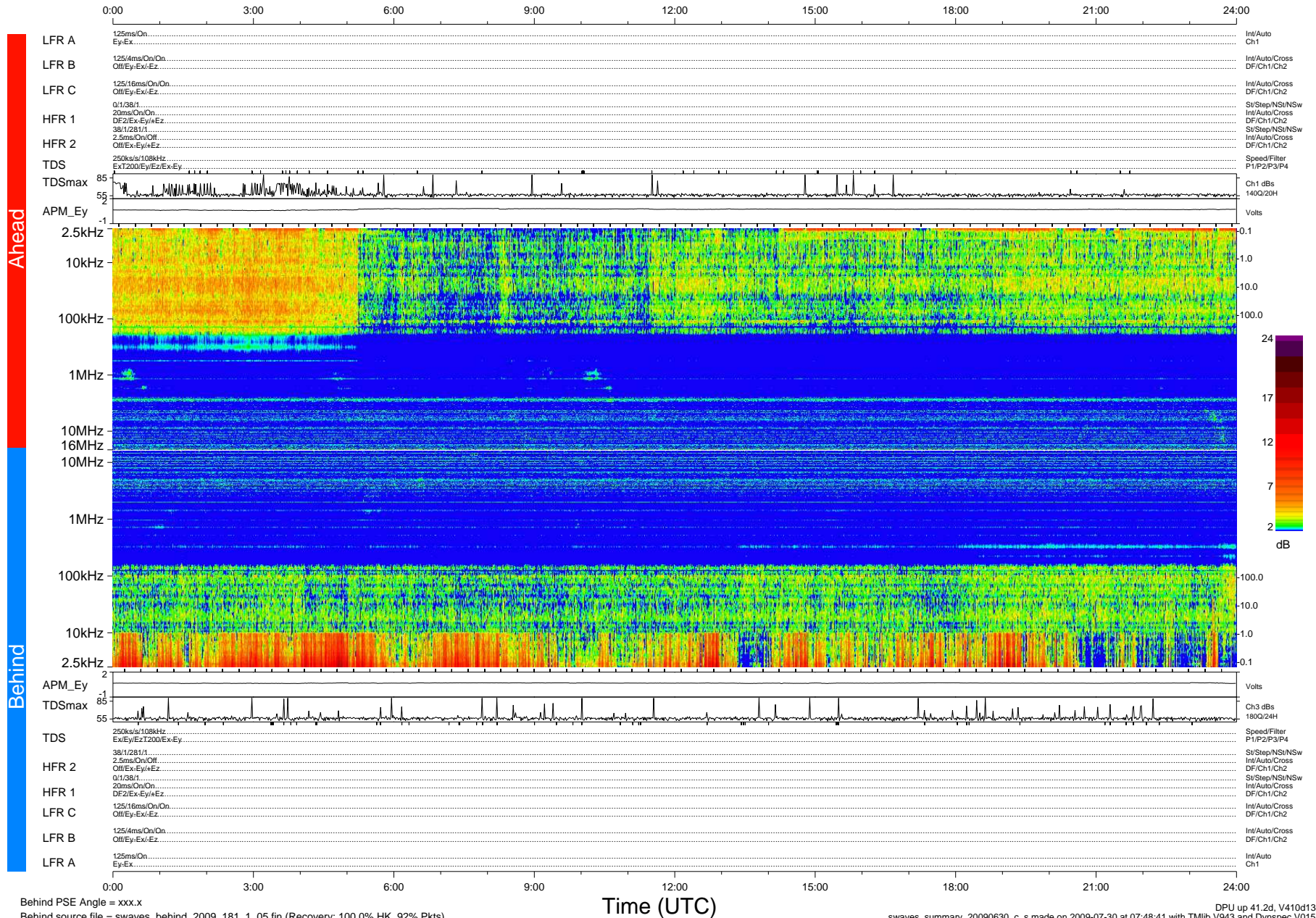


STEREO/WAVES Daily Summary - 30-Jun-2009 (DOY 181)

Ahead source file = swaves_ahead_2009_181_1_05.fin (Recovery:100.0% HK, 86% Pkts)
 Ahead PSE Angle = xxx.x

DPU up 41.1d, V410d12



Behind PSE Angle = xxx.x
 Behind source file = swaves_behind_2009_181_1_05.fin (Recovery: 100.0% HK, 92% Pkts)

Time (UTC)

DPU up 41.2d, V410d13
 swaves_summary_20090630_c_s made on 2009-07-30 at 07:48:41 with TMIb V943 and Dynspec V015