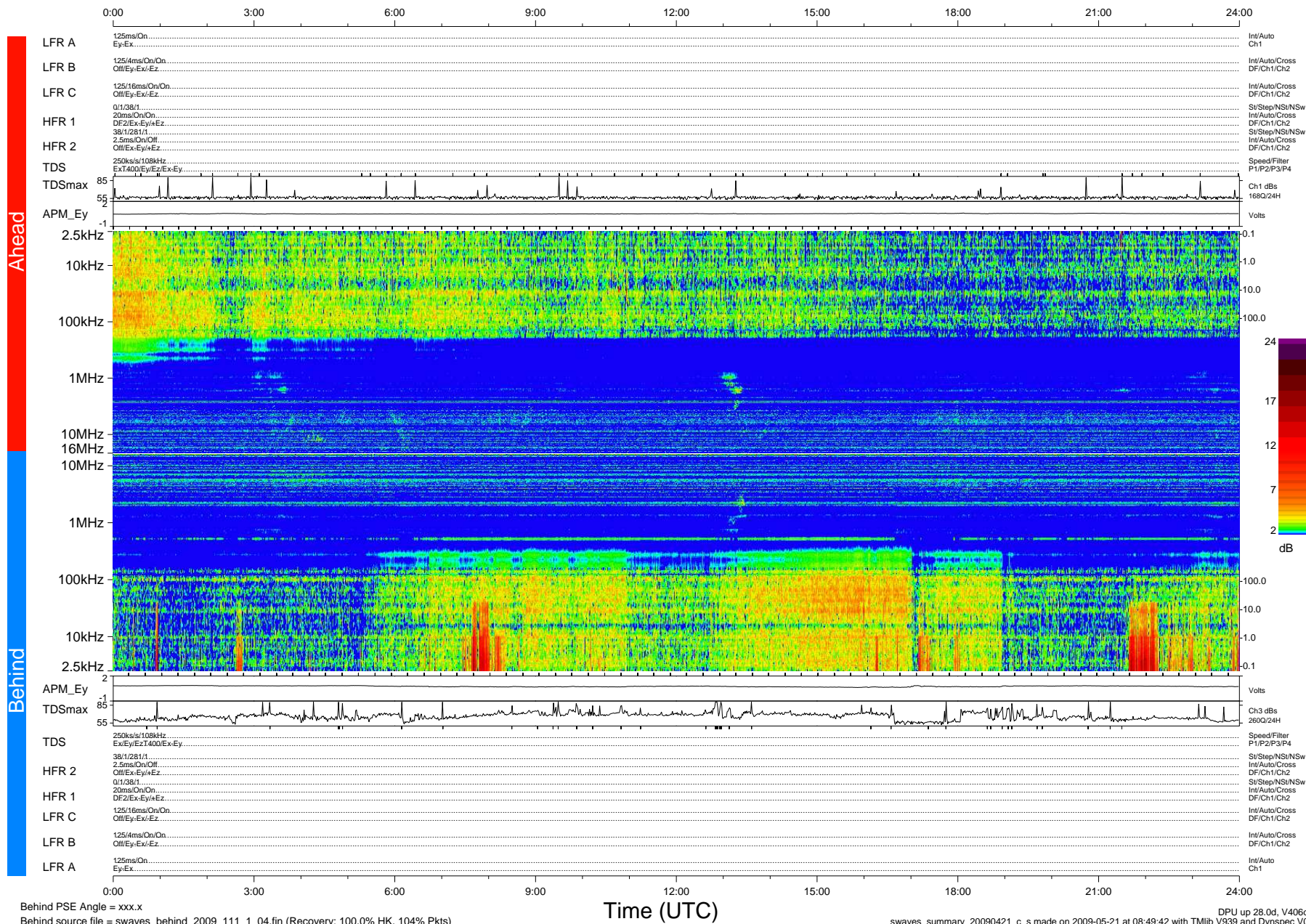


STEREO/WAVES Daily Summary - 21-Apr-2009 (DOY 111)

Ahead source file = swaves_ahead_2009_111_1_04.fin (Recovery:100.0% HK, 90% Pkts)
 Ahead PSE Angle = xxx.x

DPU up 26.4d, V408d10



Behind PSE Angle = xxx.x
 Behind source file = swaves_behind_2009_111_1_04.fin (Recovery: 100.0% HK, 104% Pkts)

Time (UTC)

DPU up 28.0d, V406d11
 swaves_summary_20090421_c_s made on 2009-05-21 at 08:49:42 with TMIlib V939 and Dynspec V015