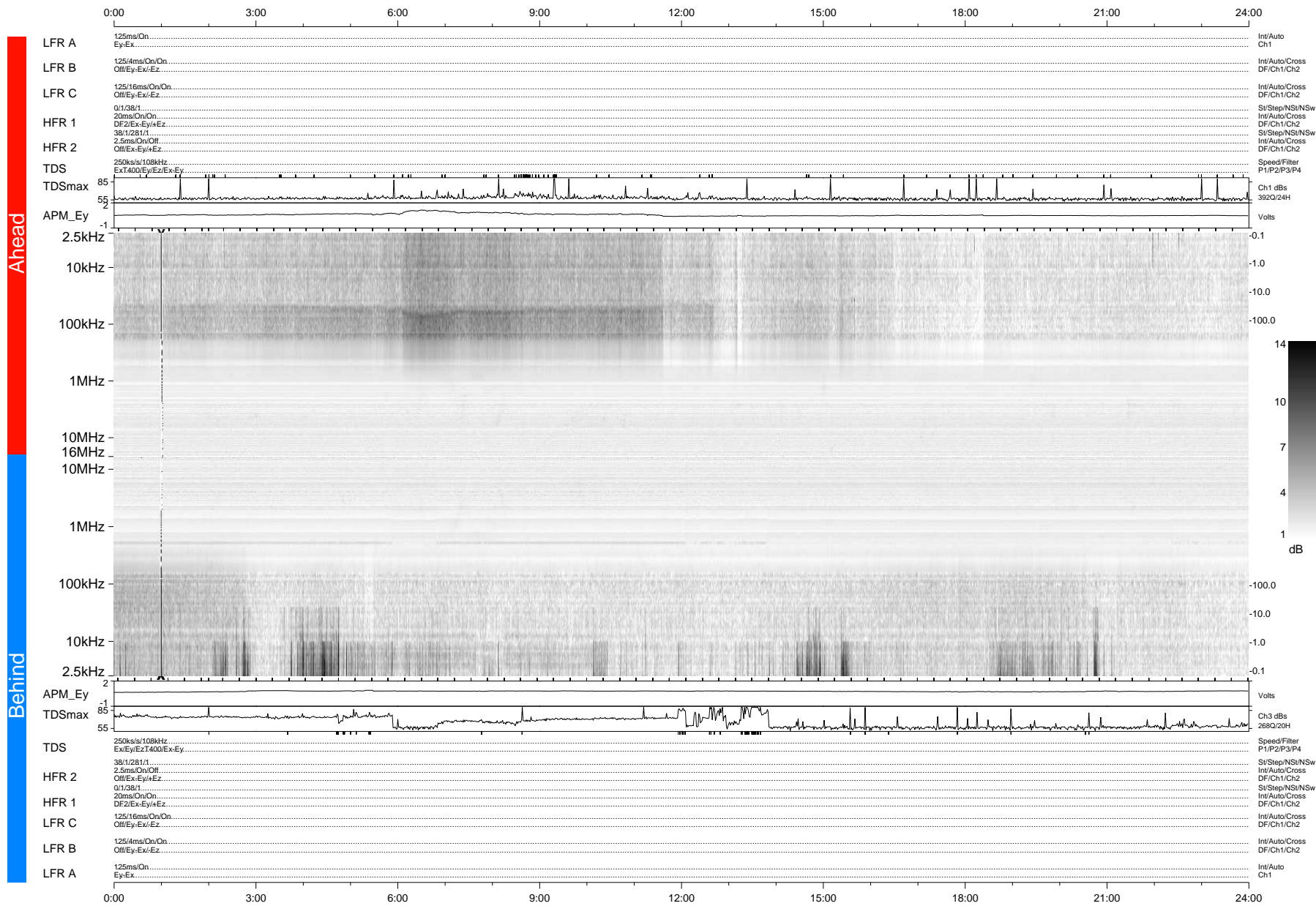


STEREO/WAVES Daily Summary - 20-Apr-2009 (DOY 110)

Ahead source file = swaves_ahead_2009_110_1_04.fin (Recovery:100.0% HK, 123% Pkts)
 Ahead PSE Angle = xxx.x

DPU up 25.4d, V408d10



Behind PSE Angle = xxx.x
 Behind source file = swaves_behind_2009_110_1_04.fin (Recovery: 100.0% HK, 104% Pkts)

Time (UTC)

DPU up 27.0d, V406d11
 swaves_summary_20090420_g_s made on 2009-05-20 at 08:50:58 with TMIlib V939 and Dynspec V015