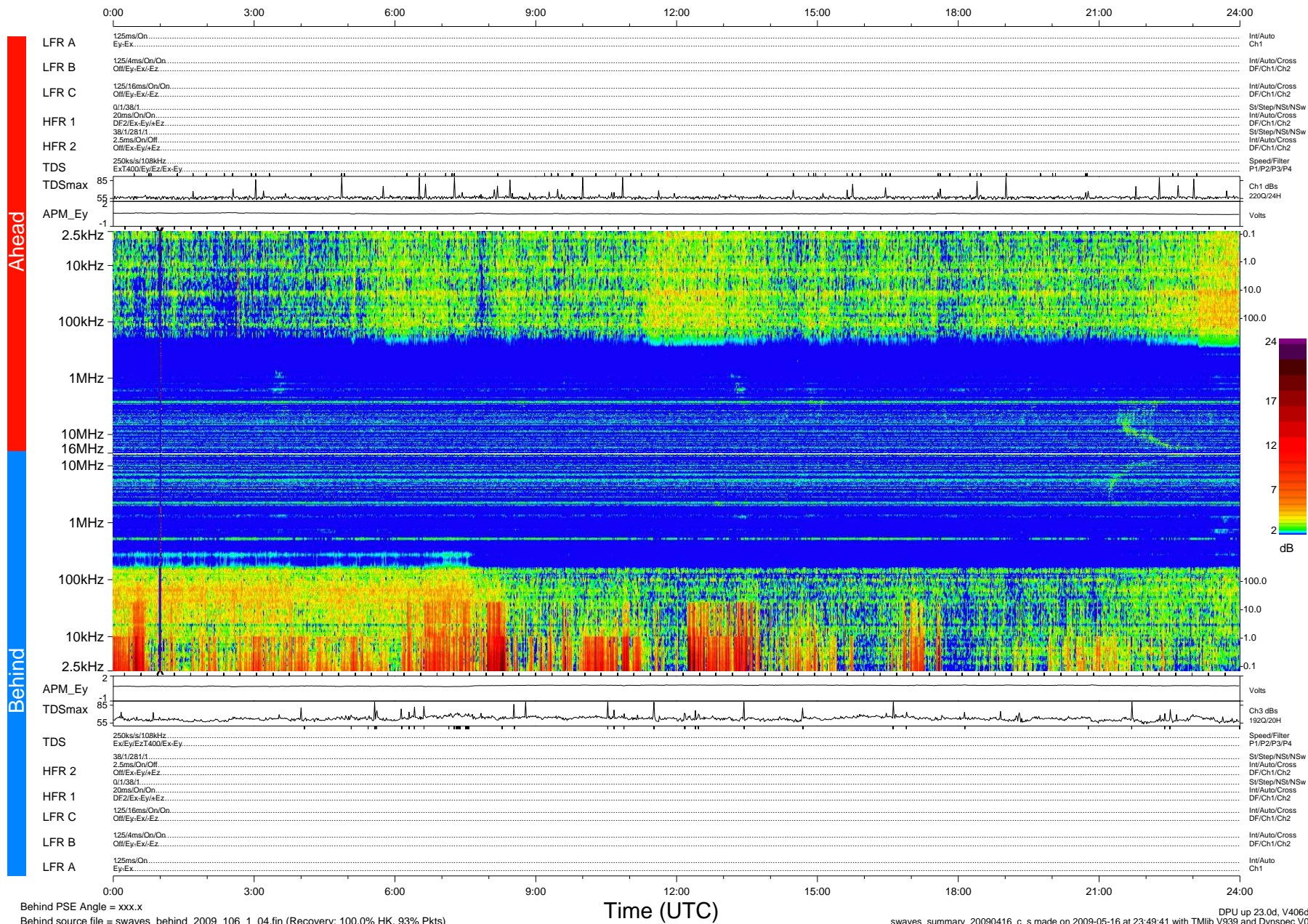


STEREO/WAVES Daily Summary - 16-Apr-2009 (DOY 106)

Ahead source file = swaves_ahead_2009_106_1_05.fin (Recovery:100.0% HK, 98% Pkts)
 Ahead PSE Angle = xxx.x

DPU up 21.4d, V408d10



Behind PSE Angle = xxx.x
 Behind source file = swaves_behind_2009_106_1_04.fin (Recovery: 100.0% HK, 93% Pkts)

Time (UTC)

swaves_summary_20090416_c_s made on 2009-05-16 at 23:49:41 with TMIlib V939 and Dynspec V015
 DPU up 23.0d, V406d11