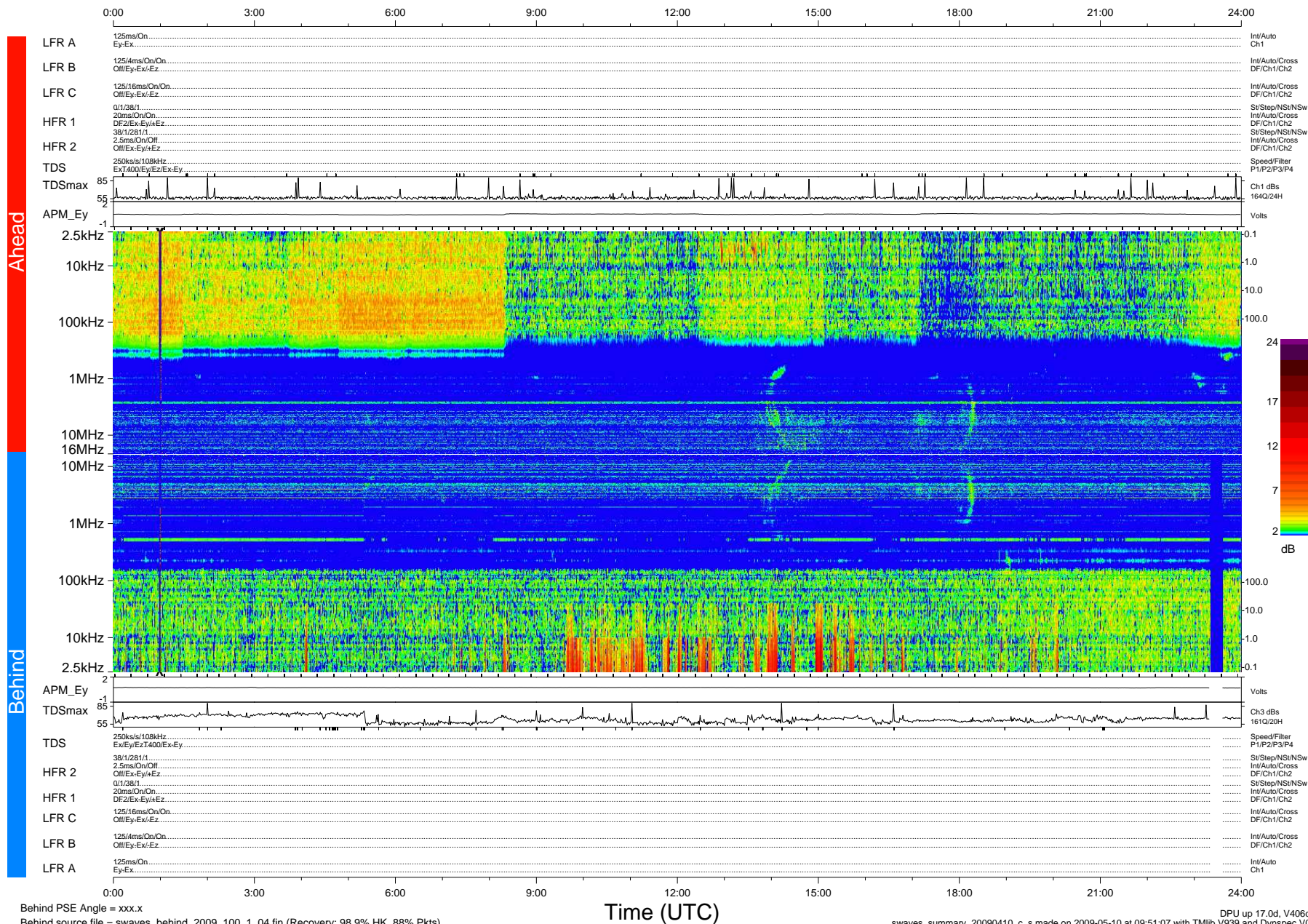


STEREO/WAVES Daily Summary - 10-Apr-2009 (DOY 100)

Ahead source file = swaves_ahead_2009_100_1_04.fin (Recovery:100.0% HK, 89% Pkts)
 Ahead PSE Angle = xxx.x

DPU up 15.4d, V408d10



Behind PSE Angle = xxx.x
 Behind source file = swaves_behind_2009_100_1_04.fin (Recovery: 98.9% HK, 88% Pkts)

Time (UTC)

swaves_summary_20090410_c_s made on 2009-05-10 at 09:51:07 with TMIb V939 and Dynspec V015
 DPU up 17.0d, V406d11