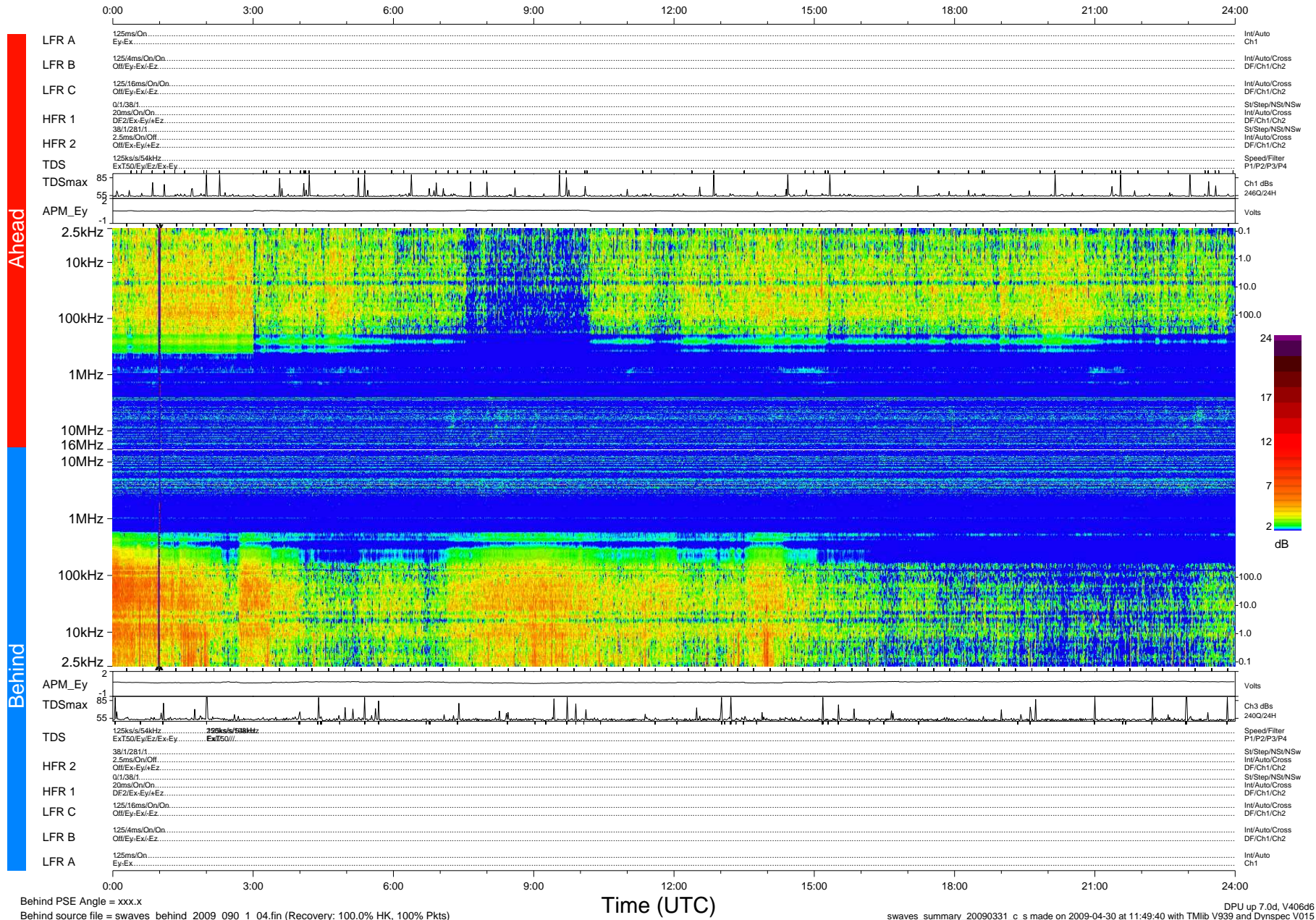


# STEREO/WAVES Daily Summary - 31-Mar-2009 (DOY 090)

Ahead source file = swaves\_ahead\_2009\_090\_1\_04.fin (Recovery:100.0% HK, 101% Pkts)  
 Ahead PSE Angle = xxx.x

DPU up 5.4d, V408d6



Behind PSE Angle = xxx.x  
 Behind source file = swaves\_behind\_2009\_090\_1\_04.fin (Recovery: 100.0% HK, 100% Pkts)

Time (UTC)

swaves\_summary\_20090331\_c\_s made on 2009-04-30 at 11:49:40 with TMIlib V939 and Dynspec V015  
 DPU up 7.0d, V406d6