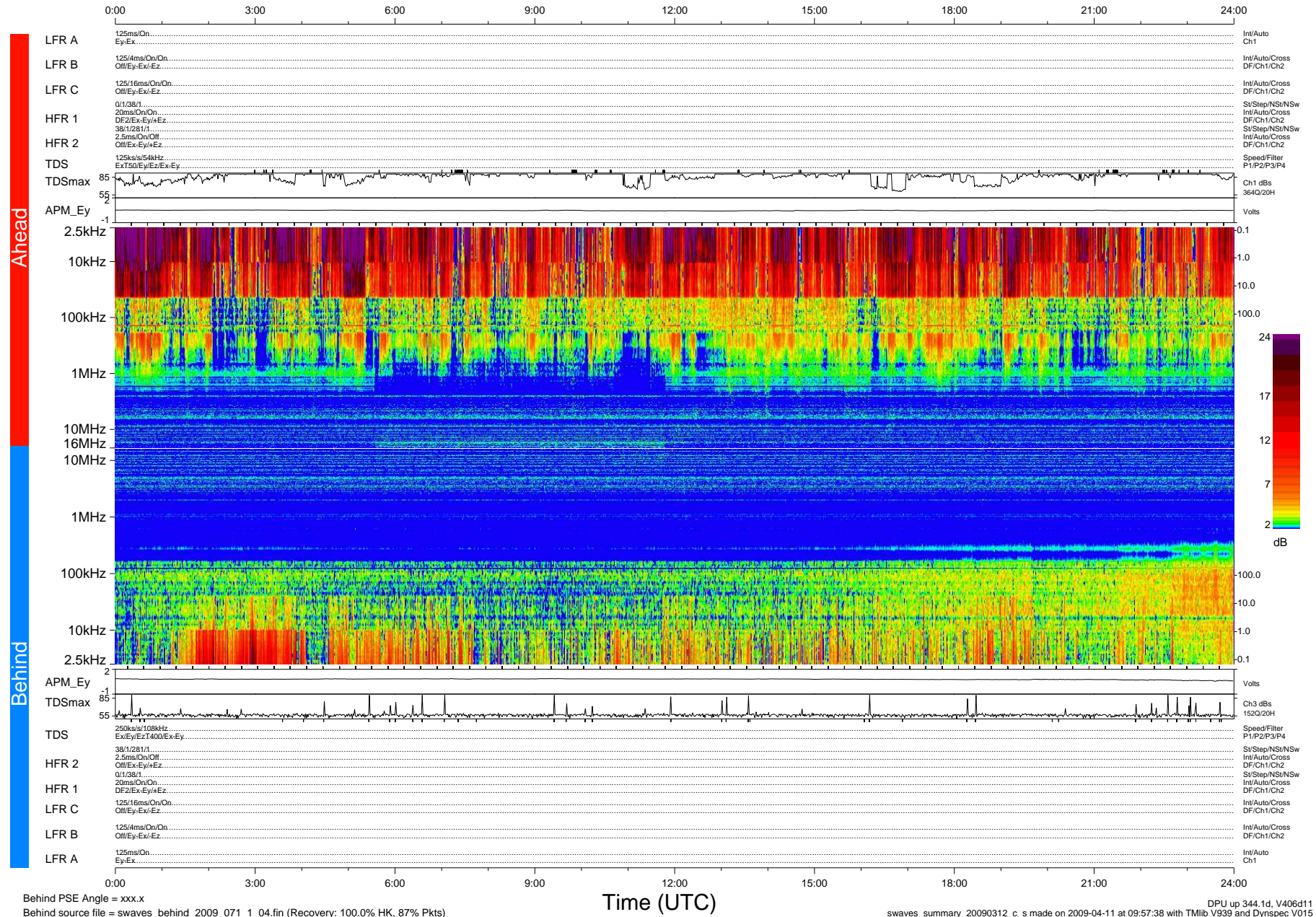


STEREO/WAVES Daily Summary - 12-Mar-2009 (DOY 071)

Ahead source file = swaves_ahead_2009_071_1_04.fin (Recovery:100.0% HK, 118% Pkts)
 Ahead PSE Angle = xxx.x

DPU up 50.1d, V406d6



Behind PSE Angle = xxx.x
 Behind source file = swaves_behind_2009_071_1_04.fin (Recovery: 100.0% HK, 87% Pkts)

Time (UTC)

DPU up 344.1d, V406d11
 swaves_summary_20090312_c_s made on 2009-04-11 at 09:57:38 with TMIb V939 and Dynspec V015