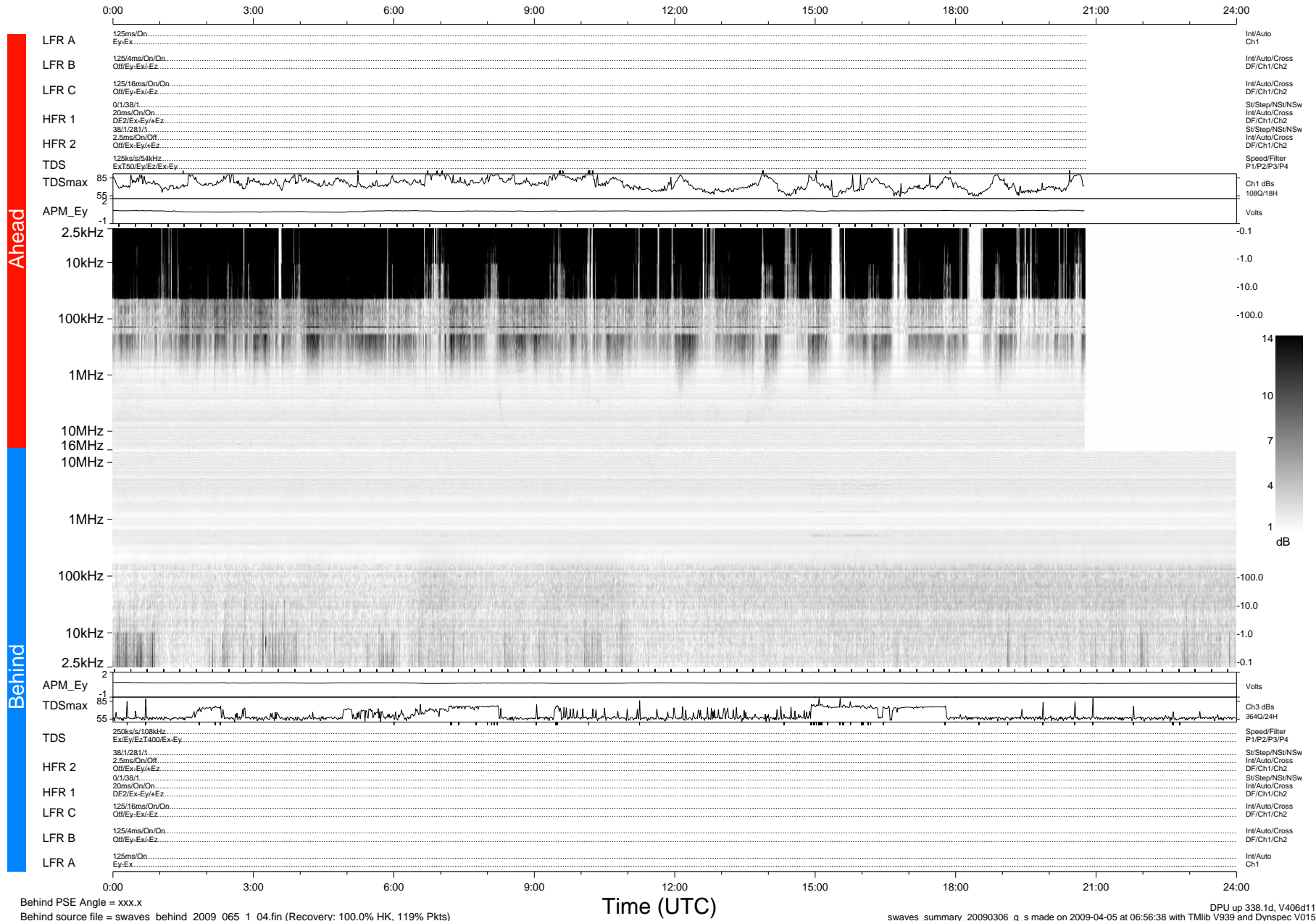


# STEREO/WAVES Daily Summary - 06-Mar-2009 (DOY 065)

Ahead source file = swaves\_ahead\_2009\_065\_1\_04.fin (Recovery:86.5% HK, 73% Pkts)  
 Ahead PSE Angle = xxx.x

DPU up 44.0d, V406d6



Behind PSE Angle = xxx.x  
 Behind source file = swaves\_behind\_2009\_065\_1\_04.fin (Recovery: 100.0% HK, 119% Pkts)

DPU up 338.1d, V406d11  
 swaves\_summary\_20090306\_g\_s made on 2009-04-05 at 06:56:38 with TMIlib V939 and Dynspec V015