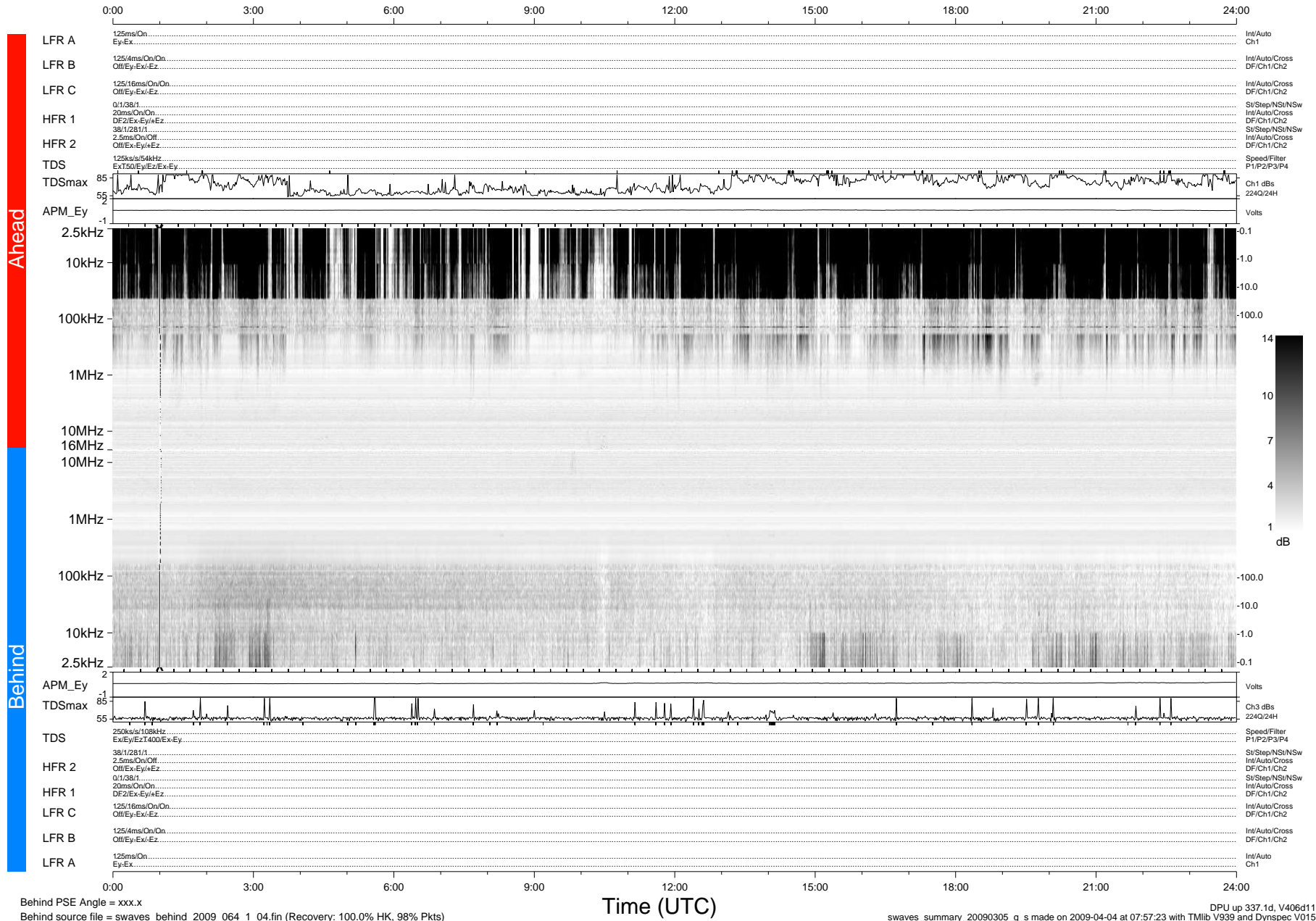


# STEREO/WAVES Daily Summary - 05-Mar-2009 (DOY 064)

Ahead source file = swaves\_ahead\_2009\_064\_1\_04.fin (Recovery:100.0% HK, 98% Pkts)  
 Ahead PSE Angle = xxx.x

DPU up 43.1d, V406d6



Behind PSE Angle = xxx.x  
 Behind source file = swaves\_behind\_2009\_064\_1\_04.fin (Recovery: 100.0% HK, 98% Pkts)

DPU up 337.1d, V406d11  
 swaves\_summary\_20090305\_g\_s made on 2009-04-04 at 07:57:23 with TMIb V939 and Dynspec V015