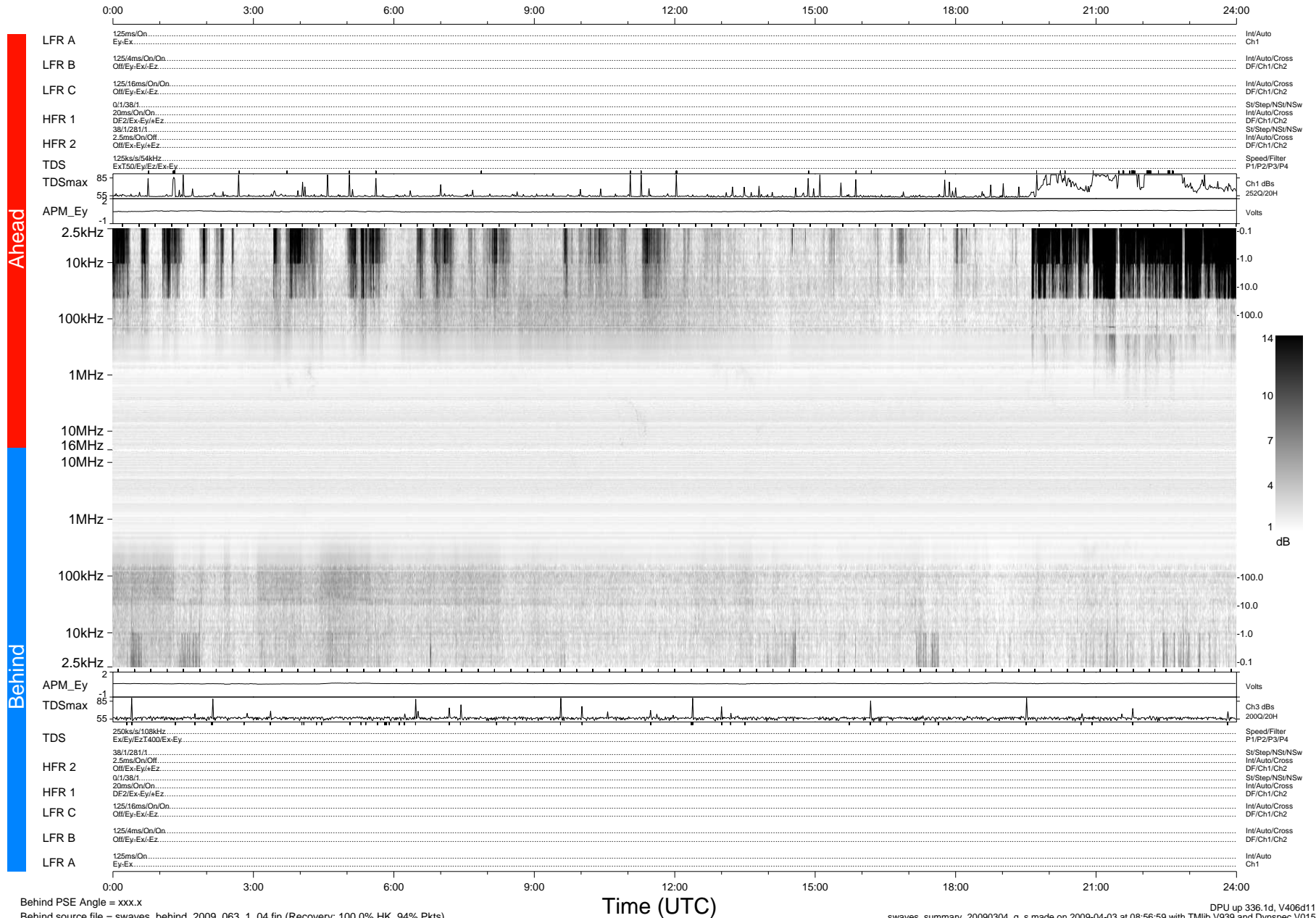


# STEREO/WAVES Daily Summary - 04-Mar-2009 (DOY 063)

Ahead source file = swaves\_ahead\_2009\_063\_1\_04.fin (Recovery:100.0% HK, 102% Pkts)  
 Ahead PSE Angle = xxx.x

DPU up 42.1d, V406d6



Behind PSE Angle = xxx.x  
 Behind source file = swaves\_behind\_2009\_063\_1\_04.fin (Recovery: 100.0% HK, 94% Pkts)

DPU up 336.1d, V406d11  
 swaves\_summary\_20090304\_g\_s made on 2009-04-03 at 08:56:59 with TMIlib V939 and Dynspec V015