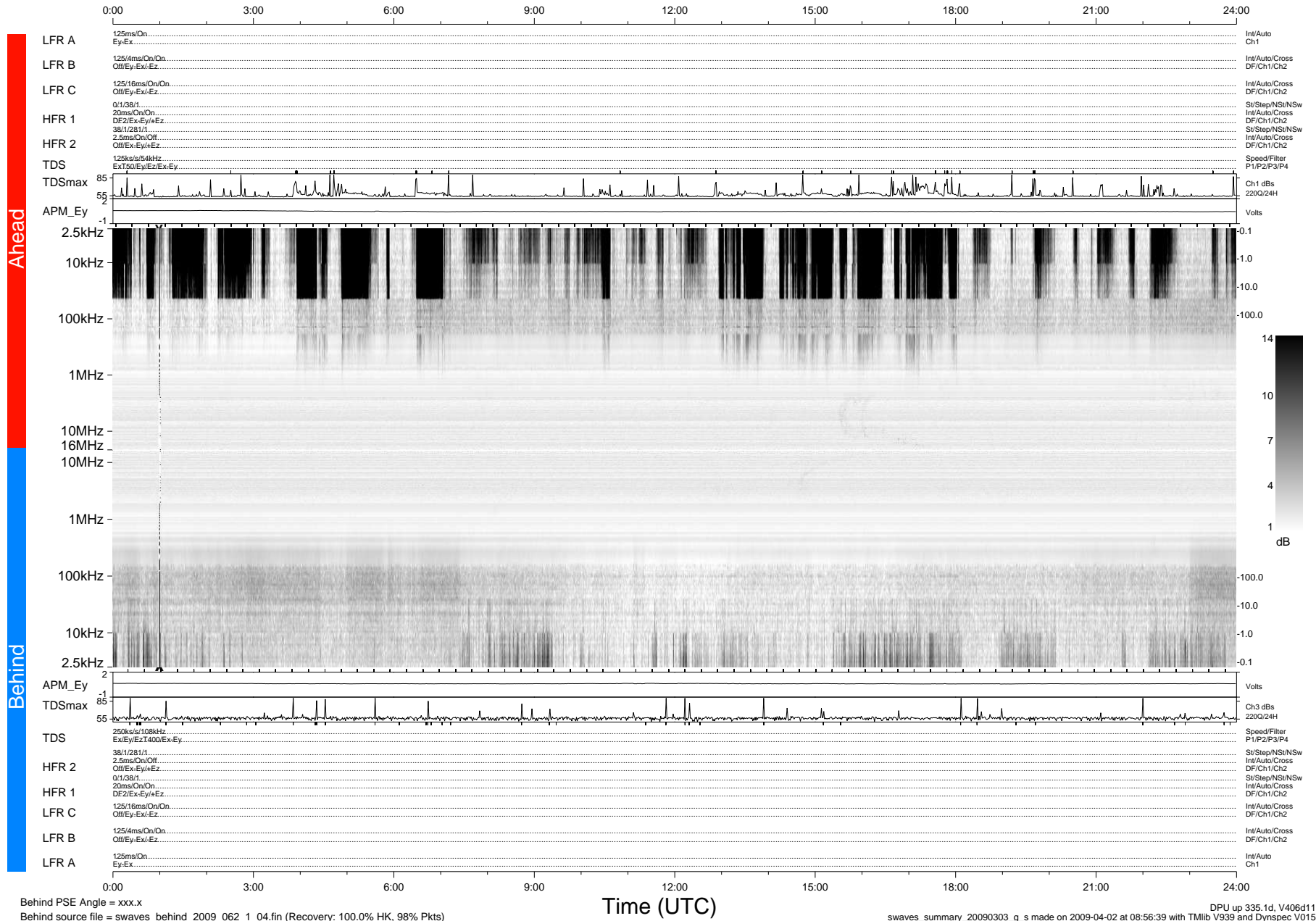


STEREO/WAVES Daily Summary - 03-Mar-2009 (DOY 062)

Ahead source file = swaves_ahead_2009_062_1_04.fin (Recovery:100.0% HK, 98% Pkts)
 Ahead PSE Angle = xxx.x

DPU up 41.1d, V406d6



Behind PSE Angle = xxx.x
 Behind source file = swaves_behind_2009_062_1_04.fin (Recovery: 100.0% HK, 98% Pkts)

DPU up 335.1d, V406d11
 swaves_summary_20090303_g_s made on 2009-04-02 at 08:56:39 with TMlib V939 and Dynspec V015