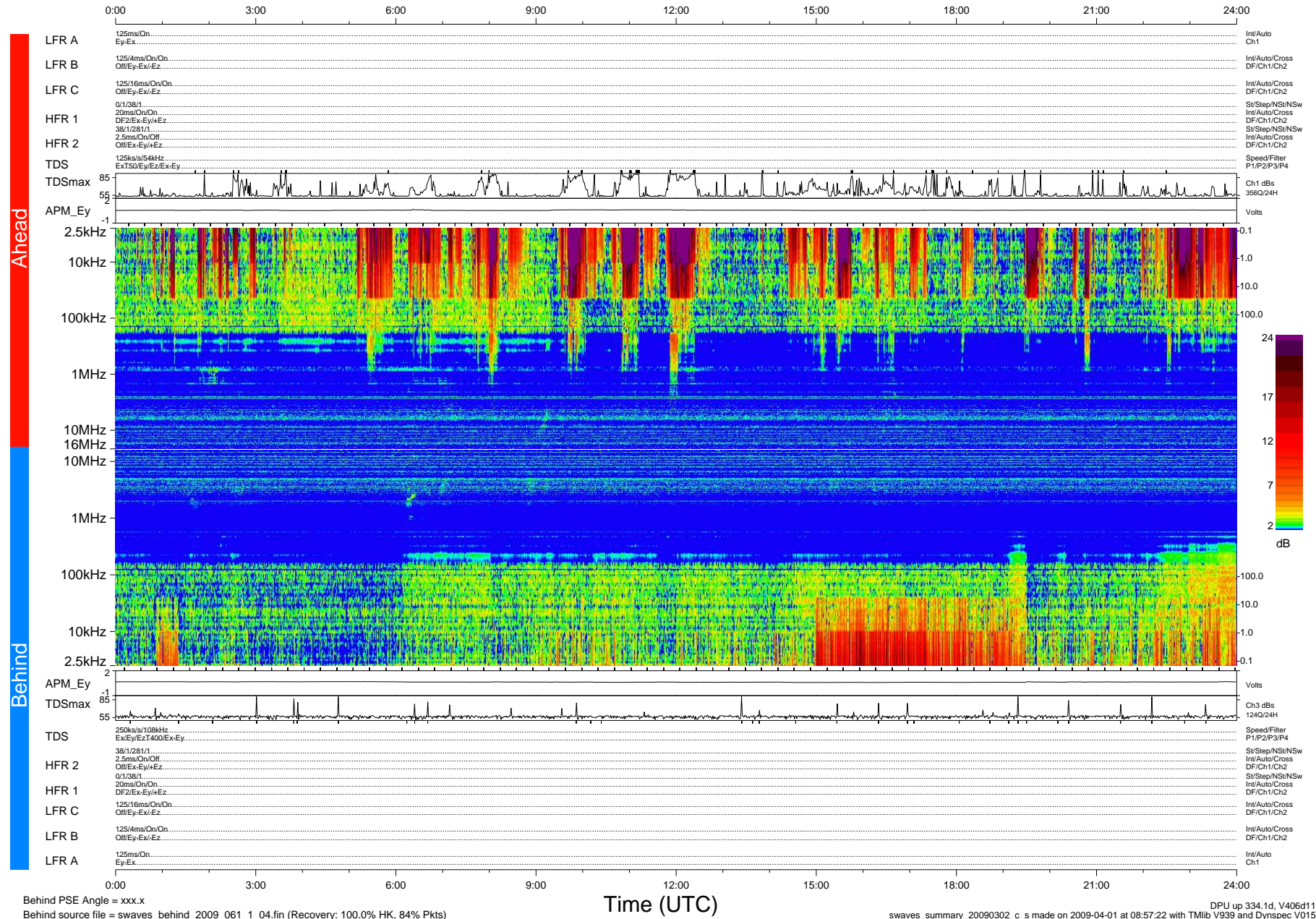


# STEREO/WAVES Daily Summary - 02-Mar-2009 (DOY 061)

Ahead source file = swaves\_ahead\_2009\_061\_1\_04.fin (Recovery:100.0% HK, 118% Pkts)  
 Ahead PSE Angle = xxx.x

DPU up 40.1d, V406d6



Behind PSE Angle = xxx.x  
 Behind source file = swaves\_behind\_2009\_061\_1\_04.fin (Recovery: 100.0% HK, 84% Pkts)

DPU up 334.1d, V406d11  
 swaves\_summary\_20090302\_c\_s made on 2009-04-01 at 08:57:22 with TMIb V939 and Dynspec V015