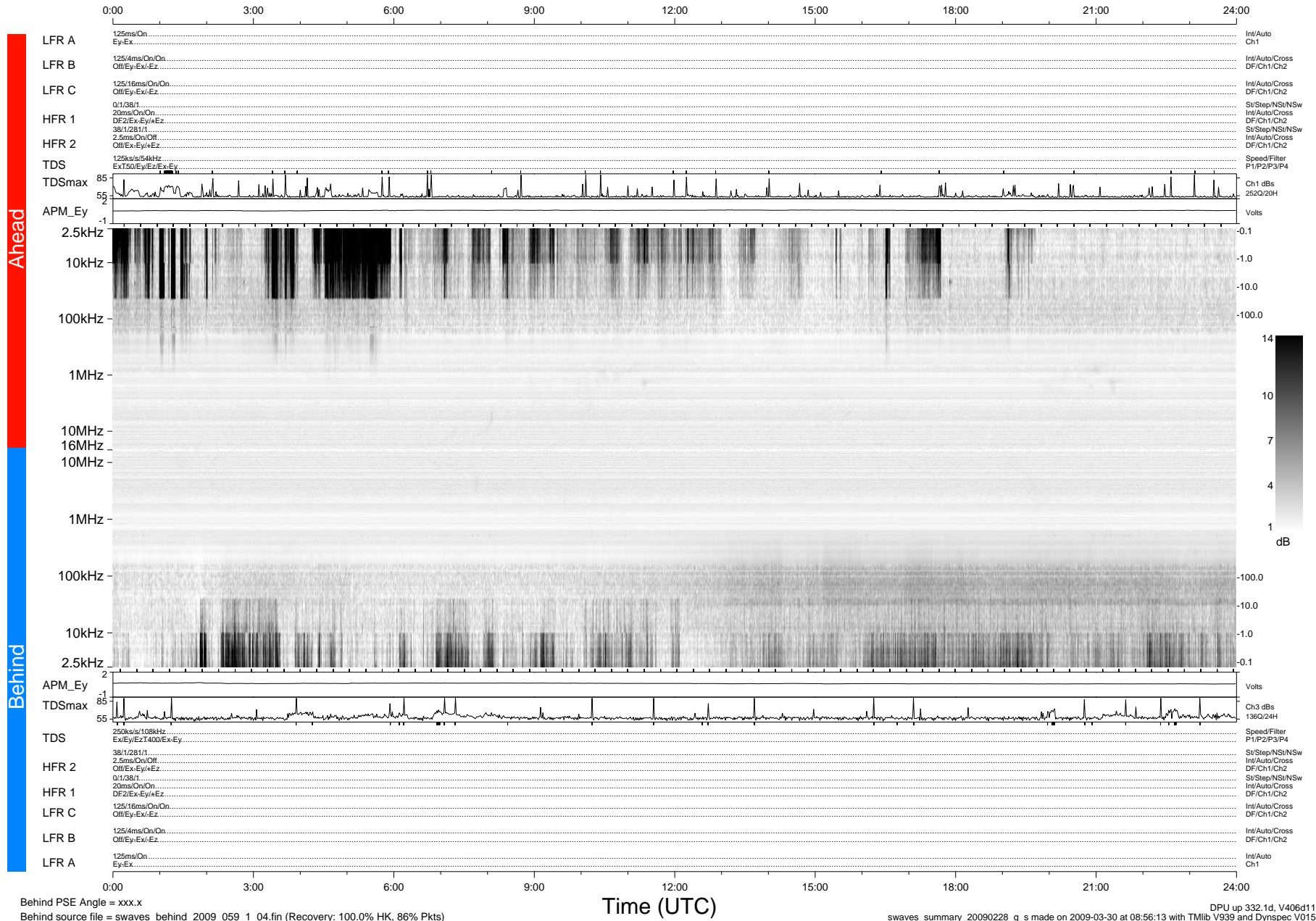


# STEREO/WAVES Daily Summary - 28-Feb-2009 (DOY 059)

Ahead source file = swaves\_ahead\_2009\_059\_1\_04.fin (Recovery:100.1% HK, 102% Pkts)  
 Ahead PSE Angle = xxx.x

DPU up 38.1d, V406d6



Behind PSE Angle = xxx.x  
 Behind source file = swaves\_behind\_2009\_059\_1\_04.fin (Recovery: 100.0% HK, 86% Pkts)

DPU up 332.1d, V406d11  
 swaves\_summary\_20090228\_g\_s made on 2009-03-30 at 08:56:13 with TMlib V939 and Dynspec V015