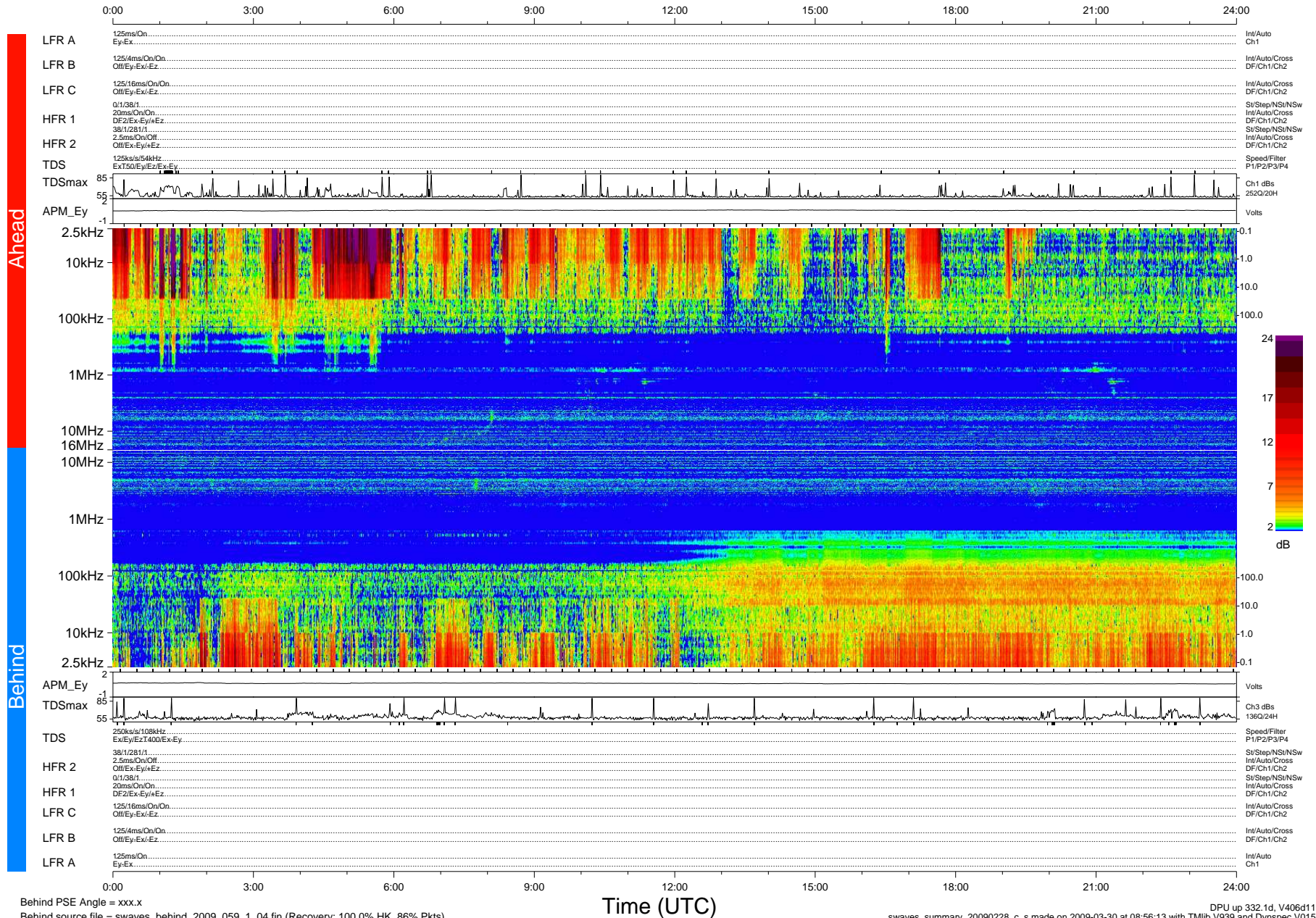


STEREO/WAVES Daily Summary - 28-Feb-2009 (DOY 059)

Ahead source file = swaves_ahead_2009_059_1_04.fin (Recovery:100.1% HK, 102% Pkts)
 Ahead PSE Angle = xxx.x

DPU up 38.1d, V406d6



Behind PSE Angle = xxx.x

Behind source file = swaves_behind_2009_059_1_04.fin (Recovery: 100.0% HK, 86% Pkts)

Time (UTC)

DPU up 332.1d, V406d11
 swaves_summary_20090228_c_s made on 2009-03-30 at 08:56:13 with Tlib V939 and Dynspec V015