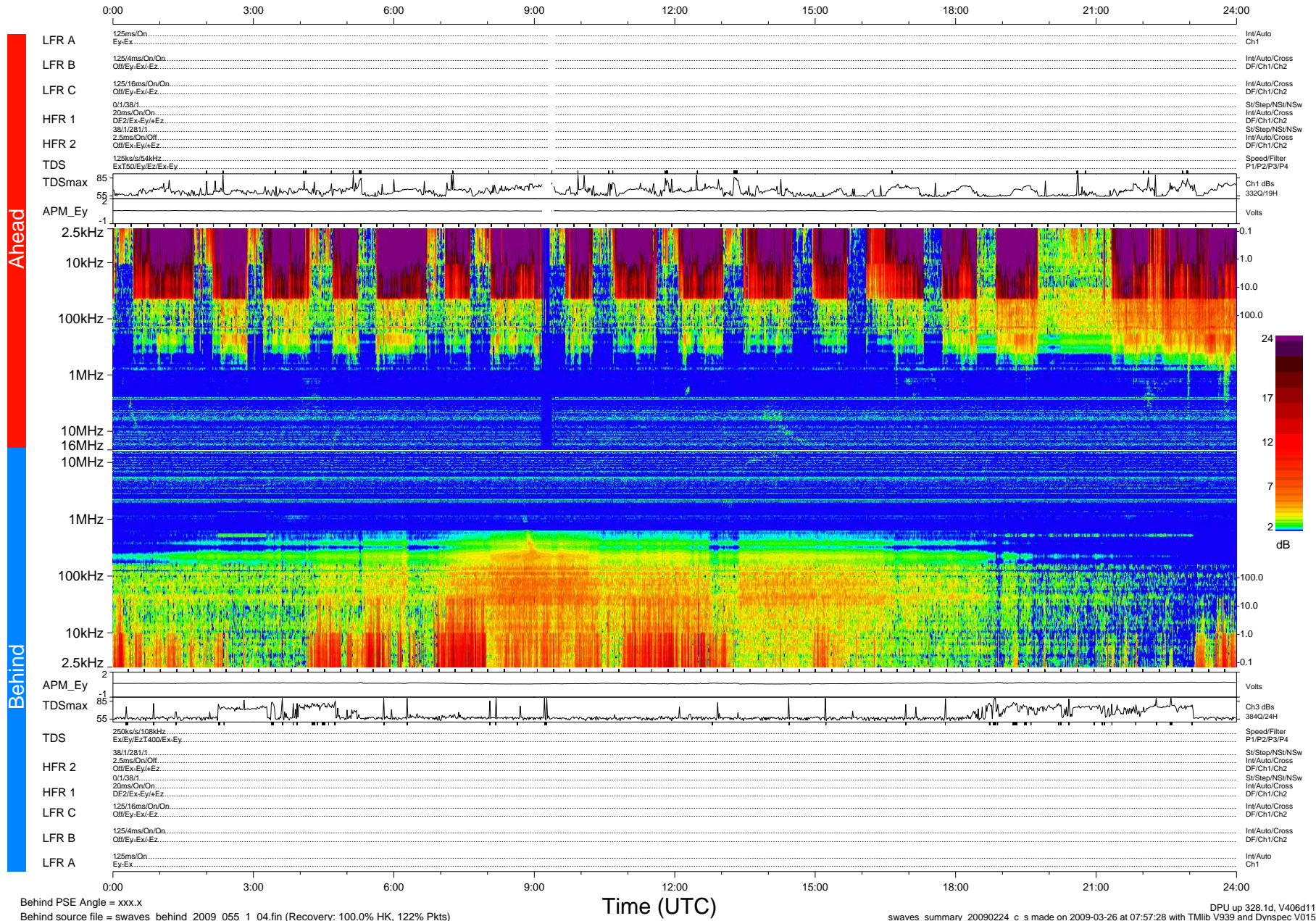


# STEREO/WAVES Daily Summary - 24-Feb-2009 (DOY 055)

Ahead source file = swaves\_ahead\_2009\_055\_1\_04.fin (Recovery:99.4% HK, 114% Pkts)  
 Ahead PSE Angle = xxx.x

DPU up 34.1d, V406d6



Behind PSE Angle = xxx.x  
 Behind source file = swaves\_behind\_2009\_055\_1\_04.fin (Recovery: 100.0% HK, 122% Pkts)

Time (UTC)

DPU up 328.1d, V406d11  
 swaves\_summary\_20090224\_c\_s made on 2009-03-26 at 07:57:28 with TMIlib V939 and Dynspec V015