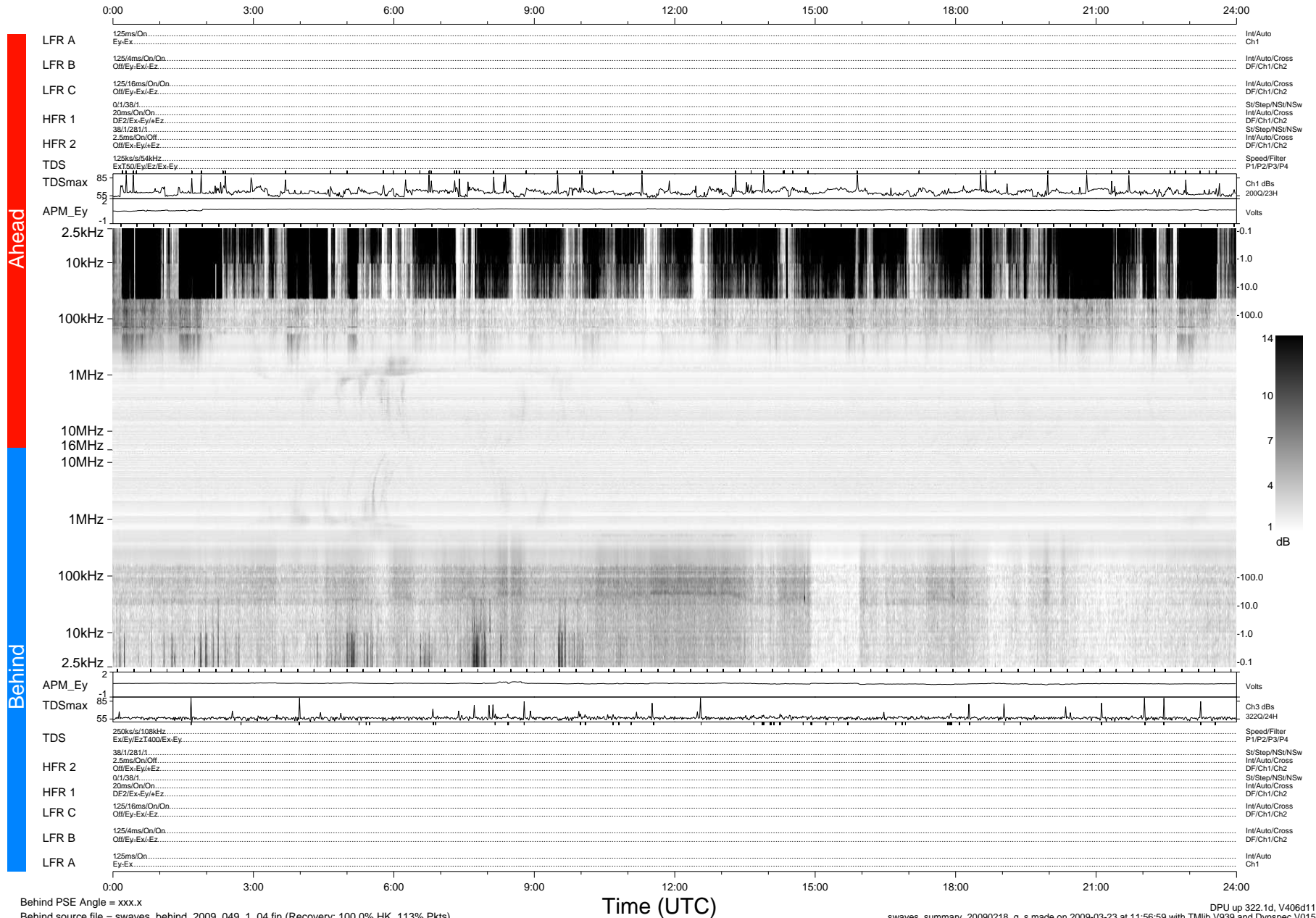


# STEREO/WAVES Daily Summary - 18-Feb-2009 (DOY 049)

Ahead source file = swaves\_ahead\_2009\_049\_1\_04.fin (Recovery:100.0% HK, 95% Pkts)  
 Ahead PSE Angle = xxx.x

DPU up 28.1d, V406d6



Behind PSE Angle = xxx.x  
 Behind source file = swaves\_behind\_2009\_049\_1\_04.fin (Recovery: 100.0% HK, 113% Pkts)

DPU up 322.1d, V406d11  
 swaves\_summary\_20090218\_g\_s made on 2009-03-23 at 11:56:59 with TMIlib V939 and Dynspec V015