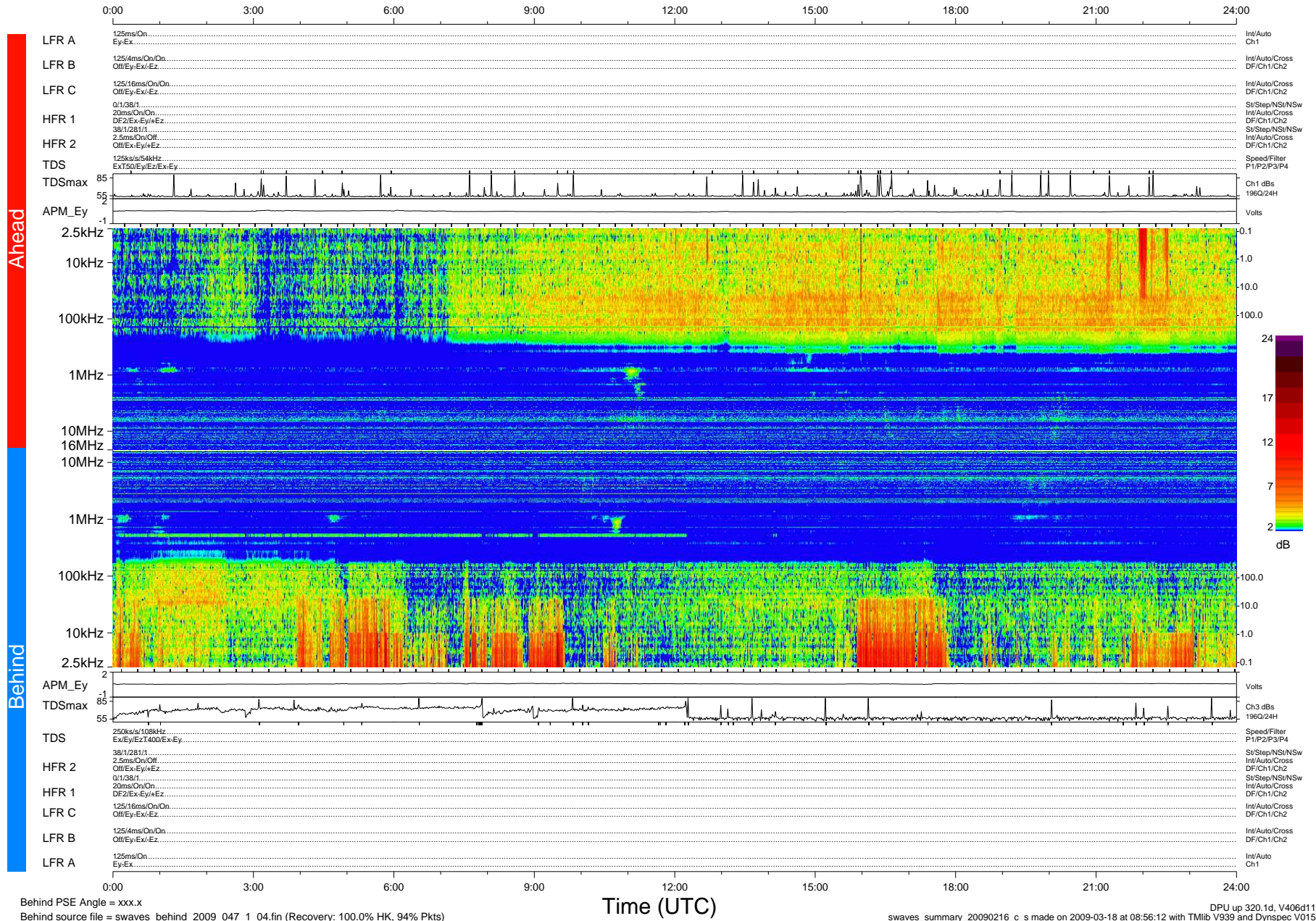


STEREO/WAVES Daily Summary - 16-Feb-2009 (DOY 047)

Ahead source file = swaves_ahead_2009_047_1_04.fin (Recovery:100.0% HK, 94% Pkts)
 Ahead PSE Angle = xxx.x

DPU up 26.1d, V406d6



Behind PSE Angle = xxx.x
 Behind source file = swaves_behind_2009_047_1_04.fin (Recovery: 100.0% HK, 94% Pkts)

DPU up 320.1d, V406d11
 swaves_summary_20090216_c_s made on 2009-03-18 at 08:56:12 with TMIb V939 and Dynspec V015